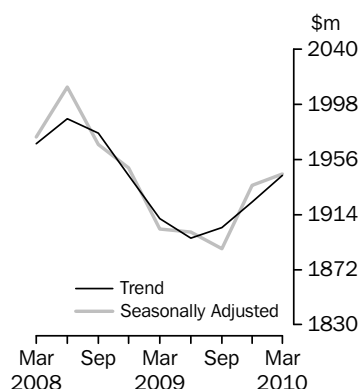


# TOURIST ACCOMMODATION, AUSTRALIA

EMBARGO: 11.30AM (CANBERRA TIME) WED 30 JUN 2010

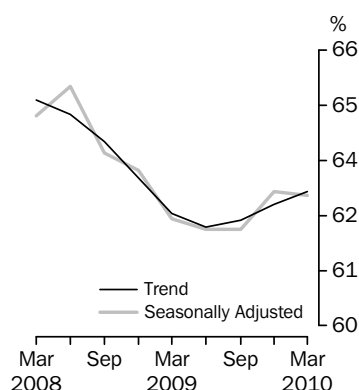
## ACCOMMODATION TAKINGS

Australia



## ROOM OCCUPANCY RATE

Australia



## INQUIRIES

For further information about these and related statistics, contact the National Information and Referral Service on 1300 135 070.

## KEY FIGURES

### ACCOMMODATION WITH 15 ROOMS OR MORE

	Dec Qtr 09	Mar Qtr 10	Dec Qtr 09 to Mar Qtr 10	Mar Qtr 09 to Mar Qtr 10
<b>Trend</b>				
Takings from accommodation (\$m)	1 923.6	1 944.0	1.1 %	1.7 %
Room occupancy rate (%)	62.7	63.0	0.3 pts	0.5 pts

### Seasonally Adjusted

Takings from accommodation (\$m)	1 936.0	1 944.7	0.4 %	2.2 %
Room occupancy rate (%)	63.0	62.9	- 0.1 pts	0.5 pts

## KEY POINTS

### ACCOMMODATION TAKINGS

- In the March 2010 quarter, the trend estimate of total accommodation takings for hotels, motels and serviced apartments with 15 or more rooms increased by 1.1% to \$1,944.0 million compared with the December quarter 2009.
- Over the same period, the seasonally adjusted estimate increased by 0.4% to \$1,944.7 million.

### ROOM OCCUPANCY RATE

- The March quarter 2010 trend estimate room occupancy rate of 63.0% for hotels, motels and serviced apartments with 15 or more rooms was 0.3 percentage points higher than the previous quarter.
- At 62.9%, the seasonally adjusted room occupancy rate was 0.1 percentage point below the December quarter 2009.

# NOTES

## FORTHCOMING ISSUES

*ISSUE (Quarter)*

*RELEASE DATE*

June 2010 30 September 2010

September 2010 6 January 2011

.....

## ABOUT THIS ISSUE

This issue presents results from the March quarter 2010 Survey of Tourist Accommodation (STA) for the following categories of establishments:

- licensed hotels and resorts with facilities and 5 or more rooms
- motels, private hotels and guest houses with facilities and 5 or more rooms
- serviced apartments with 5 or more units
- caravan parks with 40 or more powered sites
- holiday flats, units and houses of letting entities with 15 or more rooms or units
- visitor hostels with 25 or more bed spaces.

## FORTHCOMING ISSUE CHANGES

The scope of the quarterly STA will be reduced from the September quarter 2010. The revised scope will cover hotels, motels and serviced apartments with 15 or more rooms, consistent with the scope of the quarterly STA prior to the March quarter 2005.

The Department of Resources, Energy and Tourism (RET) has funded the expansion of the scope of the STA from the March quarter 2005 to the June quarter 2010. This funding will not be continued from the September quarter 2010, resulting in the following categories of establishments being excluded from future issues of this publication:

- hotels, motels and serviced apartments with 5 to 14 rooms
- holiday flats, units and houses of letting entities with 15 or more rooms or units
- caravan parks with 40 or more powered sites
- visitor hostels with 25 or more bed spaces.

For further information, refer to the Information Paper: Future Changes to Tourist Accommodation, Australia, May 2010 (cat. no. 8635.0.55.003).

Brian Pink  
Australian Statistician

# CONTENTS

	page
Abbreviations . . . . .	4
Summary of Findings . . . . .	5

## TABLES

### ORIGINAL, SEASONALLY ADJUSTED AND TREND

<b>1</b> Hotels, motels and serviced apartments with 15 or more rooms . . . . .	10
---	----

### SUMMARY

<b>2</b> Hotels, motels and serviced apartments . . . . .	12
<b>3</b> Licensed hotels and resorts . . . . .	14
<b>4</b> Motels, private hotels and guest houses . . . . .	16
<b>5</b> Serviced apartments . . . . .	18
<b>6</b> Caravan parks . . . . .	20
<b>7</b> Holiday flats, units and houses . . . . .	22
<b>8</b> Visitor hostels . . . . .	24

### STAR GRADING

<b>9</b> Hotels, motels and serviced apartments with 5-14 rooms . . . . .	25
<b>10</b> Hotels, motels and serviced apartments with 15 or more rooms . . . . .	27
<b>11</b> Hotels, motels and serviced apartments with 5 or more rooms . . . . .	29

### STATES AND TERRITORIES

<b>12</b> Hotels, motels and serviced apartments with 5-14 rooms . . . . .	31
<b>13</b> Hotels, motels and serviced apartments with 15 or more rooms . . . . .	34
<b>14</b> Hotels, motels and serviced apartments with 5 or more rooms . . . . .	37
<b>15</b> Caravan parks, short-term . . . . .	40
<b>16</b> Caravan parks, long-term . . . . .	43
<b>17</b> Caravan parks, total . . . . .	46
<b>18</b> Holiday flats, units and houses, real estate agents . . . . .	49
<b>19</b> Holiday flats, units and houses, other letting entities . . . . .	51
<b>20</b> Holiday flats, units and houses, total . . . . .	53
<b>21</b> Visitor hostels . . . . .	55

## OTHER INFORMATION

Explanatory Notes . . . . .	57
Glossary . . . . .	64

## ABBREVIATIONS

'000	thousand
\$'000	thousand dollars
\$m	million dollars
AAA	Australian Automobile Association
ABS	Australian Bureau of Statistics
ACT	Australian Capital Territory
ASGC	Australian Standard Geographical Classification
cat. no.	Catalogue number
GST	goods and services tax
no.	number
NSW	New South Wales
NT	Northern Territory
pts	percentage points
qtr	quarter
Qld	Queensland
SA	South Australia
SLA	statistical local area
STA	Survey of Tourist Accommodation
Tas.	Tasmania
TR	Tourism Region
Vic.	Victoria
WA	Western Australia

## SUMMARY OF FINDINGS

### ORIGINAL

#### *Hotels, motels and serviced apartments*

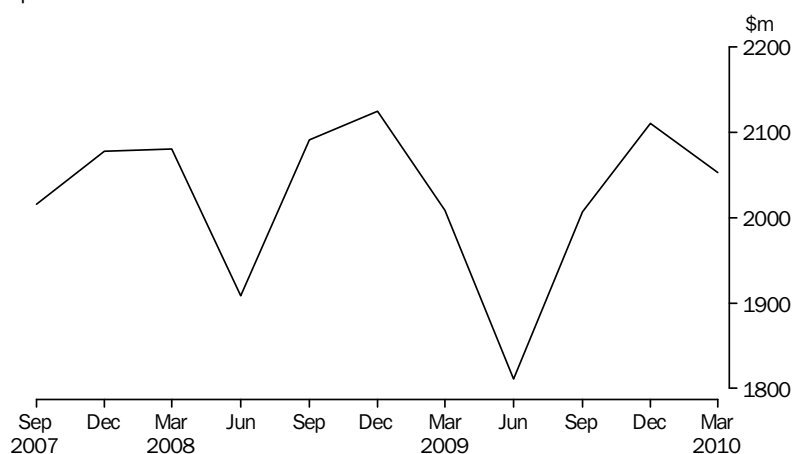
This summary contains key findings for original estimates. While trend and seasonally adjusted data are only available for hotels, motels and serviced apartments with 15 or more rooms, original estimates have two additional data series comprising hotels, motels and serviced apartments with 5 to 14 rooms and 5 or more rooms.

Original series are impacted by seasonal variations and irregular or non-seasonal influences. Comparison between quarters should be made with caution.

### ACCOMMODATION TAKINGS

In the March quarter 2010, accommodation takings were \$2,053.2 million for hotels, motels and serviced apartments with 5 or more rooms, comprising \$1,974.0 million for those establishments with 15 or more rooms and \$79.3 million for those with 5 to 14 rooms.

### TAKINGS FROM ACCOMMODATION, Hotels, motels and serviced apartments with 5 or more rooms—Australia



Accommodation takings in March quarter 2010 for hotels, motels and serviced apartments with 15 or more rooms were highest in New South Wales (\$661.8 million) and Queensland (\$464.4 million).

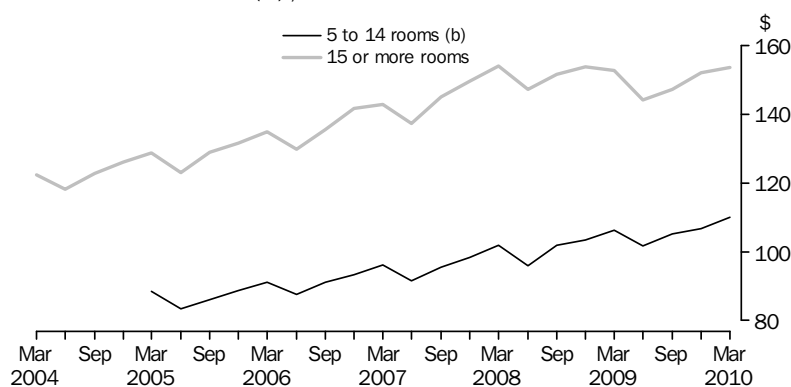
For Australia, the March quarter 2010 average takings per room night occupied were \$151.41 for establishments with 5 or more rooms. This was heavily influenced by hotels, motels and serviced apartments with 15 or more rooms which contributed 96.1% of total takings, and had an average takings per room night occupied of \$153.73. The average for 5 to 14 room establishments was \$110.05.

## SUMMARY OF FINDINGS *continued*

*Hotels, motels and serviced apartments continued*

### ACCOMMODATION TAKINGS *continued*

#### AVERAGE TAKINGS (a), Australia



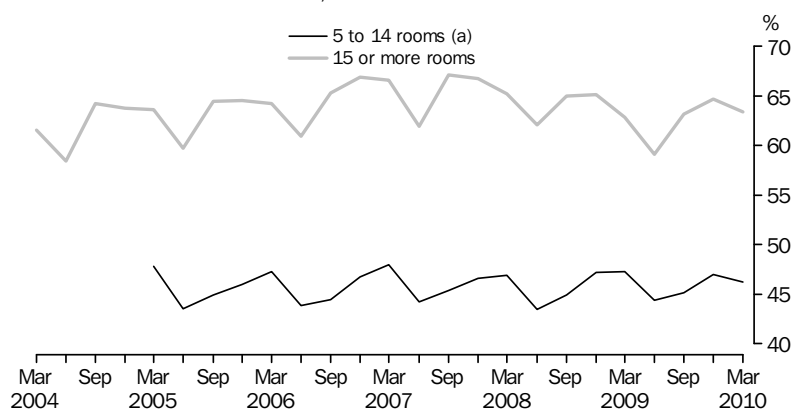
(a) Per room night occupied.

(b) These establishments were included in the survey from March 2005 onwards.

#### ROOM OCCUPANCY RATE

The room occupancy rate for hotels, motels and serviced apartments with 5 or more rooms was 62.2% in the March quarter 2010. For hotels, motels and serviced apartments with 15 or more rooms, the room occupancy rate was 63.4%, while for 5 to 14 room hotels, motels and serviced apartments the room occupancy rate was 46.2%.

#### ROOM OCCUPANCY RATE, Australia



(a) These establishments were included in the survey from March 2005 onwards.

#### ROOM NIGHTS OCCUPIED

Room nights occupied were 13.6 million in the March quarter 2010 for hotels, motels and serviced apartments with 5 or more rooms. For hotels, motels and serviced apartments with 15 or more rooms, room nights occupied were 12.8 million in March quarter 2010, while for establishments with 5 to 14 rooms, room nights occupied were 0.7 million.

New South Wales contributed the highest proportion (32.6%) of room nights occupied for hotels, motels and serviced apartments with 15 or more rooms, closely followed by Queensland at 24.7%.

## SUMMARY OF FINDINGS *continued*

### *Hotels, motels and serviced apartments continued*

#### AVERAGE LENGTH OF STAY

The average length of stay in March quarter 2010 for hotels, motels and serviced apartments with 5 or more rooms was 2.3 days. For establishments with 5 to 14 rooms, the average length of stay has remained at 1.9 days.

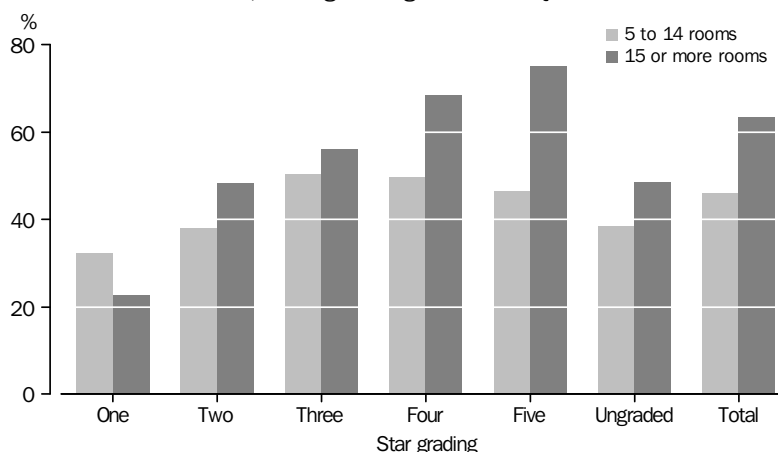
Queensland (2.7 days) reported the longest average length of stay for hotels, motels and serviced apartments with 15 or more rooms, followed by Western Australia (2.5 days). Tasmania had the shortest average length of stay of 2.0 days.

#### STAR GRADING

In the March quarter 2010, the room occupancy rate for five-star hotels, motels and serviced apartments with 5 or more rooms was 75.0% compared with 25.6% for one-star establishments. For hotels, motels and serviced apartments with 15 or more rooms, the room occupancy rate was 75.3% for five-star establishments compared with 46.5% for five-star establishments with 5 to 14 rooms.

In the 5-14 rooms category, room occupancy rates in the March quarter 2010, three-star establishments had the highest rate with 50.5% and one-star establishments had the lowest at 32.2%.

#### OCCUPANCY RATES, Stargrading—March Qtr 2010



In the March quarter 2010, the average takings per room night occupied for five-star hotels, motels and serviced apartments with 5 or more rooms was \$236.70 compared with \$72.08 for establishments with one star. The corresponding March quarter 2010 average takings for establishments with 15 or more rooms was \$236.52 for five-star establishments and \$75.22 for one-star establishments.

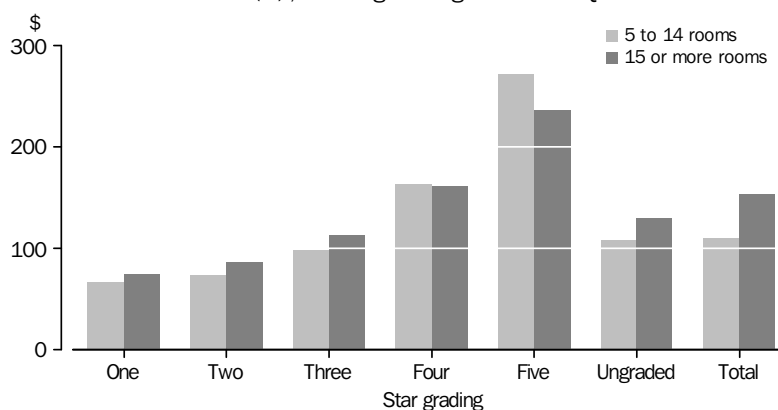
In comparison, establishments with 5 to 14 rooms had the highest average takings per room night occupied for five-star establishments (\$272.51), but lowest average takings per room night occupied for one-star establishments (\$67.01).

## SUMMARY OF FINDINGS *continued*

*Hotels, motels and serviced apartments continued*

STAR GRADING *continued*

AVERAGE TAKINGS (a), Star grading—March Qtr 2010



(a) Per room night occupied

*Caravan parks, holiday flats, units and houses, and visitor hostels*

### ACCOMMODATION TAKINGS

In the March quarter 2010, accommodation takings for caravan parks were \$299.5 million. Of this, New South Wales contributed the highest amount with \$112.2 million or 37.5% of the Australian total for the quarter.

Short-term caravan park takings were \$252.9 million in the March quarter 2010, 84.5% of total caravan park takings.

Accommodation takings for holiday flats, units and houses were \$175.2 million in the March quarter 2010. Real estate takings accounted for 30.9% of total holiday flats, units and houses takings, the remainder were for other letting entities.

For visitor hostels, accommodation takings were \$65.2 million in the March quarter 2010.

### OCCUPANCY RATE

The site occupancy rate for all caravan parks in the March quarter 2010 was 54.9%. Short-term caravan park occupancy rate was 51.9% and long-term caravan park occupancy rate was 75.8%.

For holiday flats, units and houses, the unit occupancy rate was 48.7% in the March quarter 2010.

The bed occupancy rate for visitor hostels in Australia in the March quarter 2010 was 56.9%. New South Wales, Victoria and Western Australia had the highest bed occupancy rates for the December quarter with 69.1%, 60.1% and 53.9% respectively.

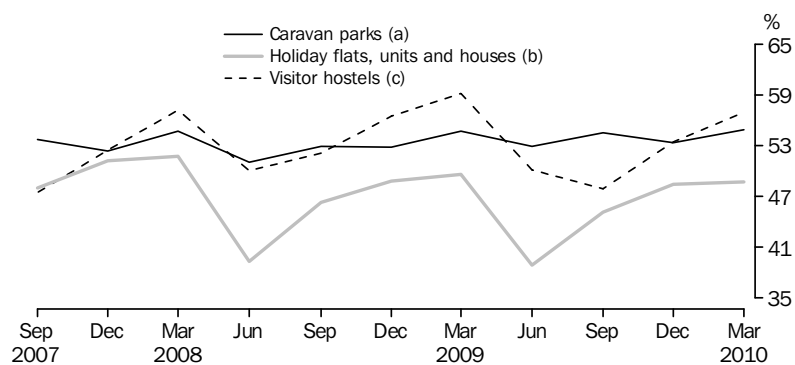


## SUMMARY OF FINDINGS *continued*

Caravan parks, holiday  
flats, units and houses,  
and visitor hostels  
*continued*

OCCUPANCY RATE *continued*

### OCCUPANCY RATES, Australia



(a) Site occupancy rate.  
(b) Unit occupancy rate.  
(c) Bed occupancy rate.

Period	ORIGINAL		SEASONALLY ADJUSTED		TREND	
	Takings from accommodation	Room occupancy rate	Takings from accommodation	Room occupancy rate	Takings from accommodation	Room occupancy rate
	\$m	%	\$m	%	\$m	%
<b>2006</b>						
September Quarter	1 740.5	65.3	1 691.4	64.0	1 715.8	64.6
December Quarter	1 866.6	66.9	1 783.1	65.4	1 762.5	65.2
<b>2007</b>						
March Quarter	1 832.3	66.6	1 808.1	66.1	1 806.5	65.7
June Quarter	1 667.1	61.9	1 827.6	65.3	1 843.2	65.8
September Quarter	1 942.6	67.1	1 894.8	65.9	1 878.9	65.5
December Quarter	2 000.6	66.8	1 908.8	65.2	1 926.8	65.3
<b>2008</b>						
March Quarter	1 999.8	65.2	1 973.5	64.7	1 967.8	65.1
June Quarter	1 838.3	62.1	2 011.3	65.4	1 987.0	64.8
September Quarter	2 014.8	65.0	1 967.2	63.9	1 976.2	64.1
December Quarter	2 044.1	65.1	1 949.7	63.5	1 943.5	63.3
<b>2009</b>						
March Quarter	1 928.8	62.9	1 902.8	62.4	1 911.1	62.5
June Quarter	1 739.3	59.1	1 900.7	62.2	1 895.9	62.2
September Quarter	1 930.6	63.1	1 887.6	62.2	1 904.0	62.4
December Quarter	2 030.5	64.7	1 936.0	63.0	1 923.6	62.7
<b>2010</b>						
March Quarter	1 974.0	63.4	1 944.7	62.9	1 944.0	63.0

Period	ORIGINAL		SEASONALLY ADJUSTED		TREND	
	Takings change from prev. qtr	Room occupancy change from prev. qtr	Takings change from prev. qtr	Room occupancy change from prev. qtr	Takings change from prev. qtr	Room occupancy change from prev. qtr
	%	pts	%	pts	%	pts
<b>2006</b>						
September Quarter	14.0	4.4	0.9	-0.3	3.0	0.6
December Quarter	7.2	1.6	5.4	1.4	2.7	0.6
<b>2007</b>						
March Quarter	-1.8	-0.3	1.4	0.8	2.5	0.5
June Quarter	-9.0	-4.7	1.1	-0.9	2.0	0.1
September Quarter	16.5	5.2	3.7	0.7	1.9	-0.3
December Quarter	3.0	-0.4	0.7	-0.8	2.5	-0.2
<b>2008</b>						
March Quarter	—	-1.6	3.4	-0.4	2.1	-0.2
June Quarter	-8.1	-3.1	1.9	0.7	1.0	-0.3
September Quarter	9.6	2.9	-2.2	-1.5	-0.5	-0.6
December Quarter	1.5	0.1	-0.9	-0.4	-1.7	-0.8
<b>2009</b>						
March Quarter	-5.6	-2.3	-2.4	-1.1	-1.7	-0.8
June Quarter	-9.8	-3.7	-0.1	-0.2	-0.8	-0.3
September Quarter	11.0	4.0	-0.7	—	0.4	0.2
December Quarter	5.2	1.5	2.6	0.9	1.0	0.3
<b>2010</b>						
March Quarter	-2.8	-1.3	0.4	-0.1	1.1	0.3

— nil or rounded to zero (including null cells)

## SUMMARY OF HOTELS, MOTELS AND SERVICED APARTMENTS, Australia

	<i>Establishments</i>	<i>Rooms</i>	<i>Bed spaces</i>	<i>Persons employed</i>	<i>Room nights occupied</i>	<i>Room occupancy rate</i>
	no.	no.	no.	no.	'000	%

## HOTELS MOTELS AND SERVICED APARTMENTS WITH 5 TO 14 ROOMS

<b>2009</b>						
March Quarter	1 866	17 956	52 896	10 588	748.7	47.2
June Quarter	1 834	17 693	52 401	10 527	708.2	44.4
September Quarter	1 823	17 611	51 821	10 735	729.5	45.1
December Quarter	1 813	17 586	52 188	10 667	749.4	47.0
<b>2010</b>						
March Quarter	1 814	17 599	52 178	10 509	720.3	46.2
<b>Year ended March 2009</b>	..	..	..	..	3 011.4	45.7
<b>Year ended March 2010</b>	..	..	..	..	2 907.4	45.7

## HOTELS MOTELS AND SERVICED APARTMENTS WITH 15 OR MORE ROOMS

<b>2009</b>						
March Quarter	4 301	225 733	642 391	112 139	12 623.6	62.9
June Quarter	4 292	225 581	641 977	110 126	12 063.0	59.1
September Quarter	4 301	225 874	638 127	111 373	13 106.5	63.1
December Quarter	4 310	226 434	640 139	110 936	13 343.1	64.7
<b>2010</b>						
March Quarter	4 295	227 231	640 842	110 536	12 840.5	63.4
<b>Year ended March 2009</b>	..	..	..	..	51 648.0	63.8
<b>Year ended March 2010</b>	..	..	..	..	51 353.1	62.6

## HOTELS MOTELS AND SERVICED APARTMENTS WITH 5 OR MORE ROOMS

<b>2009</b>						
March Quarter	6 167	243 689	695 287	122 727	13 372.3	61.7
June Quarter	6 126	243 274	694 378	120 653	12 771.2	58.0
September Quarter	6 124	243 485	689 948	122 108	13 836.0	61.8
December Quarter	6 123	244 020	692 327	121 603	14 092.5	63.4
<b>2010</b>						
March Quarter	6 109	244 830	693 020	121 045	13 560.8	62.2
<b>Year ended March 2009</b>	..	..	..	..	54 659.4	62.4
<b>Year ended March 2010</b>	..	..	..	..	54 260.5	61.4

.. not applicable

SUMMARY OF HOTELS, MOTELS AND SERVICED APARTMENTS, Australia *continued*

	<i>Guest nights occupied</i>	<i>Bed occupancy rate</i>	<i>Guest arrivals</i>	<i>Average length of stay</i>	<i>Takings from accommodation</i>
	'000	%	'000	days	\$'000
HOTELS MOTELS AND SERVICED APARTMENTS WITH 5 TO 14 ROOMS					
<b>2009</b>					
March Quarter	1 422.4	30.5	740.5	1.9	79 626
June Quarter	1 285.9	27.3	686.1	1.9	72 054
September Quarter	1 350.1	28.4	713.0	1.9	76 712
December Quarter	1 412.9	29.9	744.3	1.9	80 015
<b>2010</b>					
March Quarter	1 353.6	29.4	707.8	1.9	79 269
<b>Year ended March 2009</b>	5 556.4	28.7	3 001.8	1.9	307 004
<b>Year ended March 2010</b>	5 402.5	28.7	2 851.3	1.9	308 051
HOTELS MOTELS AND SERVICED APARTMENTS WITH 15 OR MORE ROOMS					
<b>2009</b>					
March Quarter	22 495.0	39.5	9 713.7	2.3	1 928 783
June Quarter	20 874.5	36.0	9 361.3	2.2	1 739 272
September Quarter	23 217.5	39.6	10 315.0	2.3	1 930 613
December Quarter	23 852.6	41.0	10 466.3	2.3	2 030 540
<b>2010</b>					
March Quarter	22 864.0	40.2	9 847.6	2.3	1 973 969
<b>Year ended March 2009</b>	90 010.6	39.0	39 857.3	2.3	7 825 933
<b>Year ended March 2010</b>	90 808.6	39.2	39 990.1	2.3	7 674 394
HOTELS MOTELS AND SERVICED APARTMENTS WITH 5 OR MORE ROOMS					
<b>2009</b>					
March Quarter	23 917.5	38.8	10 454.2	2.3	2 008 410
June Quarter	22 160.4	35.3	10 047.4	2.2	1 811 327
September Quarter	24 567.6	38.8	11 028.0	2.2	2 007 325
December Quarter	25 265.5	40.2	11 210.6	2.3	2 110 555
<b>2010</b>					
March Quarter	24 217.6	39.4	10 555.4	2.3	2 053 238
<b>Year ended March 2009</b>	95 566.9	38.2	42 859.1	2.2	8 132 937
<b>Year ended March 2010</b>	96 211.1	38.4	42 841.4	2.2	7 982 445

## SUMMARY OF LICENSED HOTELS AND RESORTS, AUSTRALIA

	<i>Establishments</i>	<i>Rooms</i>	<i>Bed spaces</i>	<i>Persons employed</i>	<i>Room nights occupied</i>	<i>Room occupancy rate</i>
	no.	no.	no.	no.	'000	%
.....						
LICENSED HOTELS WITH 5 TO 14 ROOMS						
.....						
<b>2008</b>						
March Quarter	435	4 162	11 053	5 943	148.1	39.7
June Quarter	423	4 053	10 828	5 855	138.0	37.2
September Quarter	423	4 088	10 965	6 035	138.9	37.0
December Quarter	420	4 064	10 957	6 007	144.6	38.8
<b>2009</b>						
March Quarter	418	4 031	10 872	5 867	139.9	38.6
<b>Year ended March 2009</b>	..	..	..	..	583.3	38.2
<b>Year ended March 2010</b>	..	..	..	..	561.4	37.9
.....						
LICENSED HOTELS WITH 15 OR MORE ROOMS						
.....						
<b>2008</b>						
March Quarter	852	84 338	220 781	68 541	5 083.2	67.8
June Quarter	853	84 365	221 827	66 830	4 820.3	63.2
September Quarter	853	84 701	221 594	67 262	5 260.1	67.6
December Quarter	859	85 181	222 167	67 217	5 431.2	70.1
<b>2009</b>						
March Quarter	859	85 883	224 274	67 025	5 258.7	68.8
<b>Year ended March 2009</b>	..	..	..	..	20 497.8	68.4
<b>Year ended March 2010</b>	..	..	..	..	20 770.4	67.4
.....						
LICENSED HOTELS WITH 5 OR MORE ROOMS						
.....						
<b>2008</b>						
March Quarter	1 287	88 500	231 834	74 484	5 231.2	66.5
June Quarter	1 276	88 418	232 655	72 685	4 958.3	62.0
September Quarter	1 276	88 789	232 559	73 297	5 399.1	66.2
December Quarter	1 279	89 245	233 124	73 224	5 575.8	68.6
<b>2009</b>						
March Quarter	1 277	89 914	235 146	72 892	5 398.6	67.5
<b>Year ended March 2009</b>	..	..	..	..	21 081.1	67.0
<b>Year ended March 2010</b>	..	..	..	..	21 331.8	66.1
.....						
..	not applicable					

SUMMARY OF LICENSED HOTELS AND RESORTS, AUSTRALIA *continued*

	Guest nights occupied	Bed occupancy rate	Guest arrivals	Average length of stay	Takings from accommodation
	'000	%	'000	days	\$'000

## LICENSED HOTELS WITH 5 TO 14 ROOMS

## 2008

March Quarter	225.6	22.8	129.3	1.7	12 137
June Quarter	205.3	20.7	118.8	1.7	10 905
September Quarter	211.6	21.0	124.6	1.7	11 078
December Quarter	225.2	22.4	130.3	1.7	12 011

## 2009

March Quarter	216.8	22.2	122.9	1.8	12 084
---------------	-------	------	-------	-----	--------

<b>Year ended March 2009</b>	879.7	21.7	505.2	1.7	45 269
------------------------------	-------	------	-------	-----	--------

<b>Year ended March 2010</b>	859.0	21.6	496.6	1.7	46 078
------------------------------	-------	------	-------	-----	--------

## LICENSED HOTELS WITH 15 OR MORE ROOMS

## 2008

March Quarter	8 297.6	42.6	3 648.4	2.3	912 295
June Quarter	7 705.1	38.5	3 514.2	2.2	800 255
September Quarter	8 607.4	42.3	3 906.5	2.2	883 648
December Quarter	8 885.4	44.3	3 967.7	2.2	958 853

## 2009

March Quarter	8 563.7	43.2	3 788.3	2.3	929 735
---------------	---------	------	---------	-----	---------

<b>Year ended March 2009</b>	32 576.6	41.7	14 771.2	2.2	3 690 153
------------------------------	----------	------	----------	-----	-----------

<b>Year ended March 2010</b>	33 761.7	42.1	15 176.7	2.2	3 572 491
------------------------------	----------	------	----------	-----	-----------

## LICENSED HOTELS WITH 5 OR MORE ROOMS

## 2008

March Quarter	8 523.2	41.6	3 777.7	2.3	924 432
June Quarter	7 910.5	37.7	3 633.0	2.2	811 160
September Quarter	8 819.0	41.3	4 031.1	2.2	894 726
December Quarter	9 110.7	43.2	4 098.0	2.2	970 863

## 2009

March Quarter	8 780.6	42.2	3 911.2	2.2	941 819
---------------	---------	------	---------	-----	---------

<b>Year ended March 2009</b>	33 456.3	40.7	15 276.4	2.2	3 735 422
------------------------------	----------	------	----------	-----	-----------

<b>Year ended March 2010</b>	34 620.7	41.1	15 673.2	2.2	3 618 568
------------------------------	----------	------	----------	-----	-----------

## SUMMARY OF MOTELS, PRIVATE HOTELS AND GUEST HOUSES, Australia

<i>Period</i>	<i>Establishments</i> no.	<i>Rooms</i> no.	<i>Bed spaces</i> no.	<i>Persons employed</i> no.	<i>Room nights occupied</i> '000	<i>Room occupancy rate</i> %
MOTELS AND GUEST HOUSES WITH 5 TO 14 ROOMS						
<b>2009</b>						
March Quarter	1 085	10 753	30 035	3 494	446.0	47.4
June Quarter	1 070	10 603	29 727	3 535	430.7	45.3
September Quarter	1 063	10 545	29 455	3 558	438.8	45.4
December Quarter	1 061	10 532	29 571	3 532	451.8	47.6
<b>2010</b>						
March Quarter	1 058	10 505	29 396	3 488	434.1	47.0
<b>Year ended March 2009</b>	..	..	..	..	1 829.6	46.3
<b>Year ended March 2010</b>	..	..	..	..	1 755.4	46.3
MOTELS AND GUEST HOUSES WITH 15 OR MORE ROOMS						
<b>2009</b>						
March Quarter	2 483	87 602	249 403	28 531	4 389.1	56.4
June Quarter	2 477	87 455	247 929	28 193	4 285.8	54.3
September Quarter	2 473	87 077	245 702	28 539	4 533.8	56.6
December Quarter	2 477	87 252	246 787	28 168	4 570.8	57.6
<b>2010</b>						
March Quarter	2 463	86 927	245 076	28 065	4 353.3	56.3
<b>Year ended March 2009</b>	..	..	..	..	18 385.2	57.8
<b>Year ended March 2010</b>	..	..	..	..	17 743.6	56.2
MOTELS AND GUEST HOUSES WITH 5 OR MORE ROOMS						
<b>2009</b>						
March Quarter	3 568	98 355	279 438	32 025	4 835.1	55.4
June Quarter	3 547	98 058	277 656	31 728	4 716.5	53.3
September Quarter	3 536	97 622	275 157	32 097	4 972.5	55.4
December Quarter	3 538	97 784	276 358	31 700	5 022.6	56.5
<b>2010</b>						
March Quarter	3 521	97 432	274 472	31 553	4 787.4	55.3
<b>Year ended March 2009</b>	..	..	..	..	20 214.8	56.5
<b>Year ended March 2010</b>	..	..	..	..	19 499.0	55.2
.. not applicable						



<i>Period</i>	<i>Guest nights occupied</i>	<i>Bed occupancy rate</i>	<i>Guest arrivals</i>	<i>Average length of stay</i>	<i>Takings from accommodation</i>
	'000	%	'000	days	\$'000

## MOTELS AND GUEST HOUSES WITH 5 TO 14 ROOMS

## 2009

March Quarter	806.5	30.8	475.5	1.7	46 395
June Quarter	742.8	28.0	444.4	1.7	43 174
September Quarter	768.3	28.5	457.0	1.7	45 328
December Quarter	802.7	30.2	474.9	1.7	46 610

## 2010

March Quarter	777.0	30.2	454.5	1.7	46 245
---------------	-------	------	-------	-----	--------

<b>Year ended March 2009</b>	<b>3 217.0</b>	<b>29.2</b>	<b>1 961.8</b>	<b>1.6</b>	<b>182 990</b>
------------------------------	----------------	-------------	----------------	------------	----------------

<b>Year ended March 2010</b>	<b>3 090.8</b>	<b>29.2</b>	<b>1 830.9</b>	<b>1.7</b>	<b>181 357</b>
------------------------------	----------------	-------------	----------------	------------	----------------

## MOTELS AND GUEST HOUSES WITH 15 OR MORE ROOMS

## 2009

March Quarter	7 555.5	34.2	4 052.5	1.9	505 881
June Quarter	7 176.8	32.1	3 912.5	1.8	483 533
September Quarter	7 737.5	34.3	4 219.4	1.8	520 772
December Quarter	7 873.9	35.1	4 270.6	1.8	530 087

## 2010

March Quarter	7 517.6	34.6	3 989.7	1.9	518 223
---------------	---------	------	---------	-----	---------

<b>Year ended March 2009</b>	<b>31 067.1</b>	<b>34.3</b>	<b>16 919.8</b>	<b>1.8</b>	<b>2 097 671</b>
------------------------------	-----------------	-------------	-----------------	------------	------------------

<b>Year ended March 2010</b>	<b>30 305.8</b>	<b>34.0</b>	<b>16 392.1</b>	<b>1.8</b>	<b>2 052 615</b>
------------------------------	-----------------	-------------	-----------------	------------	------------------

## MOTELS AND GUEST HOUSES WITH 5 OR MORE ROOMS

## 2009

March Quarter	8 362.0	33.8	4 528.0	1.8	552 276
June Quarter	7 919.7	31.7	4 356.9	1.8	526 707
September Quarter	8 505.8	33.6	4 676.4	1.8	566 100
December Quarter	8 676.6	34.6	4 745.5	1.8	576 697

## 2010

March Quarter	8 294.6	34.1	4 444.2	1.9	564 468
---------------	---------	------	---------	-----	---------

<b>Year ended March 2009</b>	<b>34 284.1</b>	<b>33.7</b>	<b>18 881.7</b>	<b>1.8</b>	<b>2 280 661</b>
------------------------------	-----------------	-------------	-----------------	------------	------------------

<b>Year ended March 2010</b>	<b>33 396.6</b>	<b>33.5</b>	<b>18 223.0</b>	<b>1.8</b>	<b>2 233 972</b>
------------------------------	-----------------	-------------	-----------------	------------	------------------

## SUMMARY OF SERVICED APARTMENTS, Australia

<i>Period</i>	<i>Establishments</i> no.	<i>Rooms</i> no.	<i>Bed spaces</i> no.	<i>Persons employed</i> no.	<i>Room nights occupied</i> '000	<i>Room occupancy rate</i> %
SERVICED APARTMENTS WITH 5 TO 14 ROOMS						
<b>2009</b>						
March Quarter	346	3 041	11 808	1 151	154.6	57.0
June Quarter	341	3 037	11 846	1 137	139.5	50.6
September Quarter	337	2 978	11 401	1 142	151.8	55.4
December Quarter	332	2 990	11 660	1 128	153.1	56.0
<b>2010</b>						
March Quarter	338	3 063	11 910	1 154	146.3	53.5
<b>Year ended March 2009</b>	..	..	..	..	598.5	53.9
<b>Year ended March 2010</b>	..	..	..	..	590.6	53.9
SERVICED APARTMENTS WITH 15 OR MORE ROOMS						
<b>2009</b>						
March Quarter	966	53 793	172 207	15 067	3 151.3	65.5
June Quarter	962	53 761	172 221	15 103	2 956.9	60.6
September Quarter	975	54 096	170 831	15 572	3 312.6	66.7
December Quarter	974	54 001	171 185	15 551	3 341.0	67.5
<b>2010</b>						
March Quarter	973	54 421	171 492	15 446	3 228.5	66.1
<b>Year ended March 2009</b>	..	..	..	..	12 765.0	66.4
<b>Year ended March 2010</b>	..	..	..	..	12 839.1	65.2
SERVICED APARTMENTS WITH 5 OR MORE ROOMS						
<b>2009</b>						
March Quarter	1 312	56 834	184 015	16 218	3 305.9	65.0
June Quarter	1 303	56 798	184 067	16 240	3 096.4	60.1
September Quarter	1 312	57 074	182 232	16 714	3 464.4	66.1
December Quarter	1 306	56 991	182 845	16 679	3 494.1	66.9
<b>2010</b>						
March Quarter	1 311	57 484	183 402	16 600	3 374.8	65.4
<b>Year ended March 2009</b>	..	..	..	..	13 363.5	65.7
<b>Year ended March 2010</b>	..	..	..	..	13 429.7	64.6
.. not applicable						

SUMMARY OF SERVICED APARTMENTS, Australia *continued*

<i>Period</i>	<i>Guest nights occupied</i>	<i>Bed occupancy rate</i>	<i>Guest arrivals</i>	<i>Average length of stay</i>	<i>Takings from accommodation</i>
	'000	%	'000	days	\$'000

## SERVICED APARTMENTS WITH 5 TO 14 ROOMS

## 2009

March Quarter	390.3	37.1	135.7	2.9	21 094
June Quarter	337.7	31.5	122.8	2.7	17 975
September Quarter	370.2	35.3	131.4	2.8	20 306
December Quarter	384.9	36.2	139.1	2.8	21 395

## 2010

March Quarter	359.8	34.0	130.4	2.8	20 940
---------------	-------	------	-------	-----	--------

<b>Year ended March 2009</b>	1 459.7	34.2	534.8	2.7	78 745
------------------------------	---------	------	-------	-----	--------

<b>Year ended March 2010</b>	1 452.7	34.2	523.8	2.8	80 616
------------------------------	---------	------	-------	-----	--------

## SERVICED APARTMENTS WITH 15 OR MORE ROOMS

## 2009

March Quarter	6 642.0	43.2	2 012.7	3.3	510 608
June Quarter	5 992.6	38.4	1 934.6	3.1	455 485
September Quarter	6 872.6	43.8	2 189.1	3.1	526 193
December Quarter	7 093.2	45.3	2 228.0	3.2	541 600

## 2010

March Quarter	6 782.7	44.1	2 069.6	3.3	526 011
---------------	---------	------	---------	-----	---------

<b>Year ended March 2009</b>	26 366.8	42.6	8 166.2	3.2	2 038 109
------------------------------	----------	------	---------	-----	-----------

<b>Year ended March 2010</b>	26 741.1	42.9	8 421.3	3.2	2 049 289
------------------------------	----------	------	---------	-----	-----------

## SERVICED APARTMENTS WITH 5 OR MORE ROOMS

## 2009

March Quarter	7 032.2	42.8	2 148.4	3.3	531 702
June Quarter	6 330.3	37.9	2 057.4	3.1	473 460
September Quarter	7 242.9	43.2	2 320.5	3.1	546 499
December Quarter	7 478.1	44.7	2 367.2	3.2	562 995

## 2010

March Quarter	7 142.5	43.5	2 200.0	3.2	546 951
---------------	---------	------	---------	-----	---------

<b>Year ended March 2009</b>	27 826.6	42.1	8 701.0	3.2	2 116 853
------------------------------	----------	------	---------	-----	-----------

<b>Year ended March 2010</b>	28 193.8	42.3	8 945.1	3.2	2 129 905
------------------------------	----------	------	---------	-----	-----------

## SUMMARY OF CARAVAN PARKS(a), Australia

## CAPACITY

<i>Period</i>	<i>Establishments</i>	<i>On-site vans</i>	<i>Other powered sites</i>	<i>Unpowered sites</i>	<i>Cabins, flats units and villas</i>	<i>Total capacity</i>
	no.	no.	no.	no.	no.	no.

## CARAVAN PARKS, SHORT TERM (b)

<b>2009</b>						
March Quarter	1 442	13 244	124 487	37 513	27 828	203 072
June Quarter	1 438	13 577	124 528	37 055	27 692	202 852
September Quarter	1 431	13 111	124 342	35 089	27 674	200 216
December Quarter	1 426	13 046	123 556	33 255	27 942	197 799
<b>2010</b>						
March Quarter	1 427	12 824	123 709	32 827	28 336	197 696
<b>Year ended March 2009</b>	..	..	..	..	..	..
<b>Year ended March 2010</b>	..	..	..	..	..	..

## CARAVAN PARKS, LONG TERM (b)

<b>2009</b>						
March Quarter	221	3 878	16 003	1 802	7 229	28 912
June Quarter	217	3 769	15 951	1 634	7 295	28 649
September Quarter	215	3 761	15 685	1 590	7 229	28 265
December Quarter	215	3 888	15 322	1 655	7 318	28 183
<b>2010</b>						
March Quarter	214	3 768	15 285	1 680	7 433	28 166
<b>Year ended March 2009</b>	..	..	..	..	..	..
<b>Year ended March 2010</b>	..	..	..	..	..	..

## CARAVAN PARKS, TOTAL

<b>2009</b>						
March Quarter	1 663	17 122	140 490	39 315	35 057	231 984
June Quarter	1 655	17 346	140 479	38 689	34 987	231 501
September Quarter	1 646	16 872	140 027	36 679	34 903	228 481
December Quarter	1 641	16 934	138 878	34 910	35 260	225 982
<b>2010</b>						
March Quarter	1 641	16 592	138 994	34 507	35 769	225 862
<b>Year ended March 2009</b>	..	..	..	..	..	..
<b>Year ended March 2010</b>	..	..	..	..	..	..

.. not applicable

(b) For definitions of short-term and long-term caravan parks, see Glossary.

(a) Comprising establishments with 40 or more powered sites and cabins, flats, units and villas.

SUMMARY OF CARAVAN PARKS(a), Australia *continued*

<i>Period</i>	<i>Persons employed</i>	<i>Sites occupied by long-term guests</i>	<i>Other sites permanently reserved</i>	<i>Site nights occupied</i>	<i>Site occupancy rate</i>	<i>Takings from accommodation</i>
	no.	no.	no.	'000	%	\$'000
<b>CARAVAN PARKS, SHORT TERM (b)</b>						
<b>2009</b>						
March Quarter	9 174	19 120	38 689	9 410.7	51.6	240 294
June Quarter	9 163	19 966	37 229	9 101.9	49.8	213 016
September Quarter	9 109	19 920	37 634	9 404.2	51.6	233 777
December Quarter	9 315	18 571	38 085	9 054.9	50.0	244 662
<b>2010</b>						
March Quarter	9 214	18 989	37 855	9 196.6	51.9	252 915
<b>Year ended March 2009</b>	..	..	..	36 577.1	49.5	868 405
<b>Year ended March 2010</b>	..	..	..	36 757.7	50.8	944 370
<b>CARAVAN PARKS, LONG TERM (b)</b>						
<b>2009</b>						
March Quarter	1 398	15 433	1 909	1 991.2	76.5	44 528
June Quarter	1 334	15 416	1 917	1 952.2	74.9	41 456
September Quarter	1 349	15 030	1 960	1 953.4	75.1	44 684
December Quarter	1 374	15 043	2 008	1 995.1	76.9	47 818
<b>2010</b>						
March Quarter	1 338	14 930	1 976	1 921.1	75.8	46 559
<b>Year ended March 2009</b>	..	..	..	8 135.5	76.3	173 815
<b>Year ended March 2010</b>	..	..	..	7 821.8	75.7	180 517
<b>CARAVAN PARKS, TOTAL</b>						
<b>2009</b>						
March Quarter	10 572	34 553	40 598	11 402.0	54.7	284 822
June Quarter	10 497	35 382	39 146	11 054.1	52.9	254 472
September Quarter	10 458	34 950	39 594	11 357.7	54.6	278 461
December Quarter	10 689	33 614	40 093	11 050.1	53.4	292 479
<b>2010</b>						
March Quarter	10 552	33 919	39 831	11 117.7	54.9	299 474
<b>Year ended March 2009</b>	..	..	..	44 712.6	52.9	1 042 221
<b>Year ended March 2010</b>	..	..	..	44 579.5	53.9	1 124 887

.. not applicable

(a) Comprising establishments with 40 or more powered sites and cabins, flats, units and villas.

(b) For definitions of short-term and long-term caravan parks, see Glossary.

## SUMMARY OF HOLIDAY FLATS, UNITS AND HOUSES, Australia

Period	CAPACITY					
	Letting entities(a)	Single bedroom	Multiple bedroom	Total	Bed spaces	Persons employed(b)
	no.	no.	no.	no.	no.	no.
REAL ESTATE AGENTS						
<b>2009</b>						
March Quarter	157	736	13 346	14 082	77 959	..
June Quarter	156	589	13 198	13 787	77 203	..
September Quarter	155	600	13 045	13 645	77 035	..
December Quarter	154	659	13 117	13 776	76 470	..
<b>2010</b>						
March Quarter	150	675	13 055	13 730	76 268	..
<b>Year ended March 2009</b>	..	..	..	..	..	..
<b>Year ended March 2010</b>	..	..	..	..	..	..
OTHER LETTING ENTITIES						
<b>2009</b>						
March Quarter	432	4 366	10 876	15 242	62 748	2 665
June Quarter	431	4 274	10 971	15 245	62 310	2 625
September Quarter	424	4 242	10 948	15 190	61 925	2 644
December Quarter	427	4 310	11 147	15 457	62 692	2 663
<b>2010</b>						
March Quarter	428	4 234	11 055	15 289	62 309	2 638
<b>Year ended March 2009</b>	..	..	..	..	..	..
<b>Year ended March 2010</b>	..	..	..	..	..	..
HOLIDAY FLATS AND UNITS						
<b>2009</b>						
March Quarter	589	5 102	24 222	29 324	140 707	..
June Quarter	587	4 863	24 169	29 032	139 513	..
September Quarter	579	4 842	23 993	28 835	138 960	..
December Quarter	581	4 969	24 264	29 233	139 162	..
<b>2010</b>						
March Quarter	578	4 909	24 110	29 019	138 577	..
<b>Year ended March 2009</b>	..	..	..	..	..	..
<b>Year ended March 2010</b>	..	..	..	..	..	..
.. not applicable						
(a) The number of owners, managers or real estate agents with 15 or more self-contained units						
(b) Employment numbers exclude real estate agents and their employees						

<i>Period</i>	<i>Unit nights occupied</i> '000	<i>Unit occupancy rate</i> %	<i>Unit lettings</i> '000	<i>Average length of stay</i> days	<i>Takings from accommodation</i> \$'000
REAL ESTATE AGENTS					
<b>2009</b>					
March Quarter	458.5	36.2	81.1	5.7	55 063
June Quarter	287.0	22.9	54.2	5.3	27 587
September Quarter	324.4	25.8	58.2	5.6	35 936
December Quarter	413.5	32.9	85.1	4.9	51 862
<b>2010</b>					
March Quarter	442.7	36.1	80.4	5.5	54 076
<b>Year ended March 2009</b>	1 479.2	29.4	271.1	5.5	164 455
<b>Year ended March 2010</b>	1 467.6	29.4	277.9	5.3	169 461
OTHER LETTING ENTITIES					
<b>2009</b>					
March Quarter	846.8	62.0	320.7	2.6	119 791
June Quarter	736.4	53.4	279.5	2.6	92 258
September Quarter	871.2	62.4	321.9	2.7	118 212
December Quarter	880.0	62.3	346.6	2.5	130 974
<b>2010</b>					
March Quarter	821.7	60.0	303.8	2.7	121 090
<b>Year ended March 2009</b>	3 382.7	61.2	1 268.2	2.7	456 819
<b>Year ended March 2010</b>	3 309.3	59.5	1 251.8	2.6	462 534
HOLIDAY FLATS AND UNITS					
<b>2009</b>					
March Quarter	1 305.3	49.6	401.8	3.2	174 854
June Quarter	1 023.4	38.9	333.7	3.1	119 845
September Quarter	1 195.5	45.1	380.1	3.1	154 148
December Quarter	1 293.6	48.4	431.7	3.0	182 836
<b>2010</b>					
March Quarter	1 264.4	48.7	384.2	3.3	175 166
<b>Year ended March 2009</b>	4 861.9	46.0	1 539.3	3.2	621 274
<b>Year ended March 2010</b>	4 776.9	45.3	1 529.7	3.1	631 995

## SUMMARY OF VISITOR HOSTELS(a), Australia

<i>Period</i>	<i>Establishments</i>	<i>Bed spaces</i>	<i>Persons employed</i>	<i>Guest arrivals</i>	<i>Guest nights occupied</i>	<i>Bed occupancy rate</i>	<i>Average length of stay</i>	<i>Takings from accommodation</i>
	no.	no.	no.	no.	no.	%	days	\$'000
<b>2009</b>								
March Quarter	406	45 847	3 396	796 892	2 426 755	59.2	3.0	66 519
June Quarter	404	45 728	3 322	716 569	2 075 288	50.1	2.9	56 439
September Quarter	400	46 398	3 341	716 024	2 036 350	47.9	2.8	54 443
December Quarter	400	46 508	3 360	783 619	2 278 877	53.5	2.9	62 921
<b>2010</b>								
March Quarter	389	46 012	3 307	807 305	2 330 683	56.9	2.9	65 155
<b>Year ended March 2009</b>	. .	. .	. .	3 069 362	9 141 166	54.4	3.0	243 704
<b>Year ended March 2010</b>	. .	. .	. .	3 023 517	8 721 198	52.1	2.9	238 958

. . not applicable

(a) Comprising establishments with 25 or more bed spaces.



## STAR GRADING

Period	1	2	3	4	5	Ungraded	Total
--------	---	---	---	---	---	----------	-------

## ESTABLISHMENTS, CAPACITY AND EMPLOYMENT (no.)

## March Quarter 2009

Establishments	69	287	857	365	24	264	1 866
Rooms	658	2 780	8 824	3 023	208	2 463	17 956
Bed spaces	1 605	7 940	26 320	9 342	564	7 125	52 896
Persons employed	816	2 210	3 692	1 387	164	2 319	10 588

## March Quarter 2010

Establishments	66	275	841	364	23	245	1 814
Rooms	660	2 678	8 753	3 033	206	2 269	17 599
Bed spaces	1 582	7 684	26 126	9 440	577	6 769	52 178
Persons employed	799	2 193	3 742	1 416	163	2 196	10 509

## ROOM NIGHTS OCCUPIED ('000)

## 2009

March Quarter	19.1	94.4	406.2	138.7	8.4	81.9	748.7
---------------	------	------	-------	-------	-----	------	-------

## 2010

January	6.3	30.7	138.8	49.7	3.3	25.4	254.1
February	5.8	27.8	117.2	39.4	2.7	23.0	215.8
March	6.8	32.1	137.8	44.5	2.7	26.3	250.3
March Quarter	18.9	90.6	393.8	133.7	8.6	74.7	720.3

## ROOM OCCUPANCY RATE (%)

## 2009

March Quarter	32.8	38.0	52.1	51.5	45.4	38.9	47.2
---------------	------	------	------	------	------	------	------

## 2010

January	31.2	37.5	51.7	53.4	51.1	38.1	47.4
February	32.1	37.2	48.3	47.0	46.2	38.3	44.5
March	33.3	39.0	51.3	48.0	42.1	39.1	46.5
March Quarter	32.2	37.9	50.5	49.6	46.5	38.5	46.2

## GUEST NIGHTS OCCUPIED ('000)

## 2009

March Quarter	28.4	161.0	758.2	315.2	17.6	142.0	1 422.4
---------------	------	-------	-------	-------	------	-------	---------

## 2010

January	9.5	54.5	282.2	121.9	7.7	49.7	525.5
February	8.3	44.2	204.7	80.7	5.9	39.9	383.7
March	9.6	51.3	241.2	92.4	6.1	43.7	444.4
March Quarter	27.5	150.0	728.1	295.0	19.7	133.3	1 353.6

## BED OCCUPANCY RATE (%)

## 2009

March Quarter	20.0	22.8	32.7	37.9	34.8	23.6	30.5
---------------	------	------	------	------	------	------	------

## 2010

January	19.7	23.4	35.3	42.0	43.0	25.2	33.1
February	19.2	20.8	28.3	30.9	36.4	22.4	26.8
March	19.7	21.8	30.1	32.0	34.2	21.9	27.9
March Quarter	19.5	22.0	31.3	35.1	37.9	23.2	29.4

continued

	STAR GRADING						
Period	1	2	3	4	5	Ungraded	Total
GUEST ARRIVALS ('000)							
2009							
March Quarter	17.7	89.4	420.6	134.7	6.9	71.1	740.5
2010							
January	5.7	29.5	149.4	47.0	3.2	23.4	258.1
February	4.8	25.0	118.1	38.0	2.6	20.1	208.7
March	6.0	29.0	138.1	42.7	2.8	22.3	241.0
March Quarter	16.5	83.5	405.6	127.7	8.6	65.8	707.8
AVERAGE LENGTH OF STAY (days)							
2009							
March Quarter	1.6	1.8	1.8	2.3	2.5	2.0	1.9
2010							
January	1.7	1.8	1.9	2.6	2.4	2.1	2.0
February	1.7	1.8	1.7	2.1	2.3	2.0	1.8
March	1.6	1.8	1.7	2.2	2.2	2.0	1.8
March Quarter	1.7	1.8	1.8	2.3	2.3	2.0	1.9
TAKINGS FROM ACCOMMODATION (\$'000)							
2009							
March Quarter	1 271	6 828	38 861	22 069	2 352	8 245	79 626
2010							
January	422	2 320	14 478	8 581	891	2 923	29 614
February	380	2 045	11 228	6 230	728	2 417	23 029
March	464	2 329	13 208	7 110	728	2 788	26 627
March Quarter	1 266	6 694	38 914	21 921	2 347	8 128	79 269
AVERAGE TAKINGS PER ROOM NIGHT OCCUPIED (\$)							
2009							
March Quarter	66.47	72.37	95.68	159.14	279.66	100.65	106.36
2010							
January	67.49	75.56	104.30	172.61	273.21	115.08	116.53
February	65.31	73.70	95.80	158.05	273.40	105.16	106.69
March	68.02	72.54	95.84	159.69	270.78	105.82	106.38
March Quarter	67.01	73.92	98.81	164.01	272.51	108.77	110.05
AVERAGE TAKINGS PER ROOM NIGHT AVAILABLE (\$)							
2009							
March Quarter	21.83	27.51	49.83	81.91	126.88	39.16	50.24
2010							
January	21.05	28.32	53.89	92.24	139.52	43.85	55.18
February	20.99	27.41	46.31	74.36	126.22	40.30	47.51
March	22.67	28.32	49.12	76.68	113.98	41.43	49.49
March Quarter	21.60	28.04	49.89	81.33	126.58	41.91	50.83

## STAR GRADING

Period	1	2	3	4	5	Ungraded	Total
--------	---	---	---	---	---	----------	-------

## ESTABLISHMENTS, CAPACITY AND EMPLOYMENT (no.)

## March Quarter 2009

Establishments	46	294	2 195	1 435	123	208	4 301
Rooms	1 432	9 319	79 387	104 230	24 908	6 457	225 733
Bed spaces	4 638	26 526	230 048	300 103	63 561	17 515	642 391
Persons employed	472	3 435	25 373	47 814	31 946	3 099	112 139

## March Quarter 2010

Establishments	43	288	2 177	1 460	127	200	4 295
Rooms	1 833	9 130	78 860	106 282	25 188	5 938	227 231
Bed spaces	5 849	25 513	227 268	301 937	64 464	15 811	640 842
Persons employed	370	3 297	25 060	47 522	31 401	2 886	110 536

## ROOM NIGHTS OCCUPIED ('000)

## 2009

March Quarter	39.2	402.0	4 025.5	6 322.0	1 572.2	262.7	12 623.6
---------------	------	-------	---------	---------	---------	-------	----------

## 2010

January	10.1	127.7	1 284.6	2 159.9	548.6	77.7	4 208.6
February	9.8	124.2	1 232.1	2 088.0	553.0	76.3	4 083.2
March	10.6	139.6	1 420.2	2 285.8	602.6	89.9	4 548.7
March Quarter	30.5	391.5	3 936.9	6 533.6	1 704.1	243.9	12 840.5

## ROOM OCCUPANCY RATE (%)

## 2009

March Quarter	39.8	48.5	57.2	67.6	70.4	48.4	62.9
---------------	------	------	------	------	------	------	------

## 2010

January	21.8	46.0	53.3	65.7	70.3	45.0	60.4
February	23.7	49.0	56.6	70.4	78.5	49.0	64.8
March	22.8	50.0	58.8	69.6	77.3	51.7	65.2
March Quarter	22.7	48.3	56.2	68.5	75.3	48.5	63.4

## GUEST NIGHTS OCCUPIED ('000)

## 2009

March Quarter	60.8	695.6	7 268.3	11 502.3	2 534.6	433.5	22 495.0
---------------	------	-------	---------	----------	---------	-------	----------

## 2010

January	17.4	227.6	2 567.9	4 433.8	959.7	137.6	8 343.9
February	15.0	203.8	2 122.9	3 574.6	857.5	122.4	6 896.2
March	17.1	230.3	2 432.2	3 895.7	909.0	139.6	7 623.9
March Quarter	49.4	661.6	7 123.0	11 904.1	2 726.2	399.6	22 864.0

## BED OCCUPANCY RATE (%)

## 2009

March Quarter	23.5	29.8	35.7	42.8	44.6	30.0	39.5
---------------	------	------	------	------	------	------	------

## 2010

January	13.8	29.8	37.1	47.5	48.1	30.3	42.6
February	13.3	29.1	33.9	42.4	47.6	29.9	38.9
March	13.5	29.9	35.0	41.7	45.6	30.5	38.9
March Quarter	13.5	29.6	35.4	43.9	47.1	30.3	40.2

	STAR GRADING						
Period	1	2	3	4	5	Ungraded	Total
GUEST ARRIVALS ('000)							
2009							
March Quarter	33.4	374.5	3 596.1	4 538.3	982.1	189.3	9 713.7
2010							
January	9.8	120.9	1 212.7	1 580.9	352.7	51.9	3 328.9
February	8.4	109.7	1 074.8	1 501.6	363.1	50.1	3 107.8
March	8.9	123.1	1 221.1	1 620.3	378.7	58.8	3 410.9
March Quarter	27.1	353.7	3 508.6	4 702.9	1 094.5	160.8	9 847.6
AVERAGE LENGTH OF STAY (days)							
2009							
March Quarter	1.8	1.9	2.0	2.5	2.6	2.3	2.3
2010							
January	1.8	1.9	2.1	2.8	2.7	2.6	2.5
February	1.8	1.9	2.0	2.4	2.4	2.4	2.2
March	1.9	1.9	2.0	2.4	2.4	2.4	2.2
March Quarter	1.8	1.9	2.0	2.5	2.5	2.5	2.3
TAKINGS FROM ACCOMMODATION (\$'000)							
2009							
March Quarter	2 808	34 576	448 403	1 024 834	384 716	33 446	1 928 783
2010							
January	746	11 271	150 544	356 920	130 371	10 330	660 181
February	720	10 716	136 806	334 777	129 383	9 848	622 250
March	826	12 148	157 388	366 283	143 299	11 593	691 537
March Quarter	2 292	34 134	444 738	1 057 980	403 053	31 771	1 973 969
AVERAGE TAKINGS PER ROOM NIGHT OCCUPIED (\$)							
2009							
March Quarter	71.59	86.01	111.39	162.11	244.69	127.32	152.79
2010							
January	74.12	88.23	117.19	165.25	237.66	132.87	156.87
February	73.32	86.31	111.04	160.34	233.98	129.16	152.39
March	78.02	87.04	110.82	160.24	237.81	128.89	152.03
March Quarter	75.22	87.20	112.97	161.93	236.52	130.24	153.73
AVERAGE TAKINGS PER ROOM NIGHT AVAILABLE (\$)							
2009							
March Quarter	28.51	41.69	63.71	109.66	172.38	61.64	96.03
2010							
January	16.13	40.61	62.45	108.62	167.16	59.80	94.68
February	17.35	42.30	62.80	112.82	183.67	63.23	98.76
March	17.81	43.50	65.19	111.46	183.73	66.58	99.07
March Quarter	17.09	42.14	63.51	110.90	178.00	63.21	97.46

## STAR GRADING

Period	1	2	3	4	5	Ungraded	Total
--------	---	---	---	---	---	----------	-------

## ESTABLISHMENTS, CAPACITY AND EMPLOYMENT (no.)

## March Quarter 2009

Establishments	115	581	3 052	1 800	147	472	6 167
Rooms	2 090	12 099	88 211	107 253	25 116	8 920	243 689
Bed spaces	6 243	34 466	256 368	309 445	64 125	24 640	695 287
Persons employed	1 288	5 645	29 065	49 201	32 110	5 418	122 727

## March Quarter 2010

Establishments	109	563	3 018	1 824	150	445	6 109
Rooms	2 493	11 808	87 613	109 315	25 394	8 207	244 830
Bed spaces	7 431	33 197	253 394	311 377	65 041	22 580	693 020
Persons employed	1 169	5 490	28 802	48 938	31 564	5 082	121 045

## ROOM NIGHTS OCCUPIED ('000)

## 2009

March Quarter	58.3	496.4	4 431.6	6 460.6	1 580.6	344.6	13 372.3
---------------	------	-------	---------	---------	---------	-------	----------

## 2010

January	16.3	158.4	1 423.4	2 209.6	551.8	103.1	4 462.7
February	15.6	151.9	1 349.3	2 127.4	555.6	99.2	4 299.1
March	17.4	171.7	1 558.0	2 330.3	605.3	116.3	4 799.0
March Quarter	49.4	482.0	4 330.7	6 667.3	1 712.7	318.7	13 560.8

## ROOM OCCUPANCY RATE (%)

## 2009

March Quarter	37.2	46.1	56.7	67.2	70.2	45.8	61.7
---------------	------	------	------	------	------	------	------

## 2010

January	24.6	44.1	53.1	65.4	70.2	43.1	59.4
February	26.2	46.3	55.7	69.7	78.2	46.0	63.4
March	26.0	47.5	58.1	69.0	77.0	48.2	63.8
March Quarter	25.6	46.0	55.6	68.0	75.0	45.7	62.2

## GUEST NIGHTS OCCUPIED ('000)

## 2009

March Quarter	89.2	856.6	8 026.5	11 817.5	2 552.2	575.6	23 917.5
---------------	------	-------	---------	----------	---------	-------	----------

## 2010

January	26.9	282.0	2 850.1	4 555.7	967.4	187.3	8 869.4
February	23.4	248.0	2 327.6	3 655.3	863.3	162.3	7 279.9
March	26.7	281.6	2 673.4	3 988.1	915.1	183.3	8 068.3
March Quarter	76.9	811.6	7 851.1	12 199.1	2 745.9	532.9	24 217.6

## BED OCCUPANCY RATE (%)

## 2009

March Quarter	22.2	28.2	35.4	42.6	44.5	28.1	38.8
---------------	------	------	------	------	------	------	------

## 2010

January	15.4	28.3	36.9	47.4	48.0	28.8	41.9
February	14.9	27.1	33.3	42.1	47.5	27.7	38.0
March	15.2	28.1	34.5	41.4	45.4	27.9	38.0
March Quarter	15.2	27.9	35.0	43.7	47.0	28.1	39.4

	STAR GRADING						
Period	1	2	3	4	5	Ungraded	Total
GUEST ARRIVALS ('000)							
2009							
March Quarter	51.0	463.9	4 016.8	4 673.0	989.0	260.4	10 454.2
2010							
January	15.5	150.4	1 362.1	1 628.0	355.8	75.3	3 587.0
February	13.3	134.8	1 192.9	1 539.6	365.7	70.2	3 316.5
March	14.9	152.1	1 359.2	1 663.0	381.5	81.2	3 651.9
March Quarter	43.6	437.3	3 914.2	4 830.6	1 103.1	226.6	10 555.4
AVERAGE LENGTH OF STAY (days)							
2009							
March Quarter	1.7	1.8	2.0	2.5	2.6	2.2	2.3
2010							
January	1.7	1.9	2.1	2.8	2.7	2.5	2.5
February	1.8	1.8	2.0	2.4	2.4	2.3	2.2
March	1.8	1.9	2.0	2.4	2.4	2.3	2.2
March Quarter	1.8	1.9	2.0	2.5	2.5	2.4	2.3
TAKINGS FROM ACCOMMODATION (\$'000)							
2009							
March Quarter	4 079	41 404	487 264	1 046 903	387 068	41 691	2 008 410
2010							
January	1 168	13 590	165 022	365 501	131 262	13 253	689 795
February	1 100	12 761	148 034	341 007	130 111	12 265	645 279
March	1 290	14 477	170 596	373 392	144 027	14 381	718 164
March Quarter	3 558	40 829	483 652	1 079 901	405 400	39 899	2 053 238
AVERAGE TAKINGS PER ROOM NIGHT OCCUPIED (\$)							
2009							
March Quarter	69.91	83.41	109.95	162.04	244.88	120.98	150.19
2010							
January	71.58	85.77	115.93	165.42	237.87	128.49	154.57
February	70.34	84.01	109.71	160.29	234.17	123.60	150.10
March	74.10	84.33	109.49	160.23	237.96	123.66	149.65
March Quarter	72.08	84.70	111.68	161.97	236.70	125.21	151.41
AVERAGE TAKINGS PER ROOM NIGHT AVAILABLE (\$)							
2009							
March Quarter	26.03	38.42	62.33	108.89	172.01	55.35	92.68
2010							
January	17.62	37.81	61.60	108.17	166.93	55.36	91.86
February	18.46	38.91	61.15	111.77	183.20	56.85	95.10
March	19.30	40.05	63.58	110.50	183.17	59.57	95.52
March Quarter	18.46	38.93	62.14	110.09	177.59	57.28	94.11

<i>Period</i>	<i>New South Wales</i>	<i>Victoria</i>	<i>Queensland</i>	<i>South Australia</i>	<i>Western Australia</i>	<i>Tasmania</i>	<i>Northern Territory</i>	<i>Australian Capital Territory</i>	<i>Australia</i>
---------------	------------------------	-----------------	-------------------	------------------------	--------------------------	-----------------	---------------------------	-------------------------------------	------------------

## ESTABLISHMENTS (no.)

<b>2009</b>									
March Quarter	597	443	409	136	143	121	14	3	1 866
June Quarter	591	430	407	134	135	118	15	4	1 834
September Quarter	592	420	409	132	134	118	15	3	1 823
December Quarter	587	419	412	129	131	117	15	3	1 813
<b>2010</b>									
March Quarter	587	415	418	128	132	117	14	3	1 814

## ROOMS (no.)

<b>2009</b>									
March Quarter	5 924	4 288	4 034	1 281	1 238	1 024	np	np	17 956
June Quarter	5 868	4 183	4 034	1 259	1 168	998	142	41	17 693
September Quarter	5 895	4 087	4 060	1 254	1 136	1 006	143	30	17 611
December Quarter	5 830	4 107	4 100	1 243	1 129	1 004	143	30	17 586
<b>2010</b>									
March Quarter	5 831	4 089	4 156	1 220	1 142	996	135	30	17 599

## BED SPACES (no.)

<b>2009</b>									
March Quarter	17 212	12 320	12 737	3 410	3 972	2 782	np	np	52 896
June Quarter	17 119	12 164	12 766	3 376	3 715	2 756	387	118	52 401
September Quarter	16 993	11 808	12 718	3 375	3 678	2 757	407	85	51 821
December Quarter	16 992	11 799	13 060	3 399	3 724	2 723	408	83	52 188
<b>2010</b>									
March Quarter	16 882	11 741	13 211	3 309	3 750	2 796	399	90	52 178

## PERSONS EMPLOYED (no.)

<b>2009</b>									
March Quarter	2 797	2 447	1 949	1 677	866	779	np	np	10 588
June Quarter	2 736	2 450	2 016	1 642	814	758	63	48	10 527
September Quarter	2 852	2 446	2 142	1 651	826	739	60	19	10 735
December Quarter	2 865	2 404	2 083	1 630	840	764	68	13	10 667
<b>2010</b>									
March Quarter	2 746	2 393	2 072	1 634	829	751	66	18	10 509

## ROOM NIGHTS OCCUPIED ('000)

<b>2009</b>									
March Quarter	240.5	169.4	179.0	48.8	50.2	55.5	np	np	748.7
June Quarter	230.5	152.0	192.1	44.9	48.0	34.2	4.7	1.9	708.2
September Quarter	240.9	144.8	216.1	44.2	47.5	28.7	5.8	1.5	729.5
December Quarter	247.3	165.2	198.3	46.9	47.5	38.8	3.9	1.4	749.4
<b>2010</b>									
March Quarter	239.8	166.8	167.5	47.3	45.5	48.7	3.1	1.6	720.3

## ROOM OCCUPANCY RATE (%)

<b>2009</b>									
March Quarter	46.1	45.1	49.8	42.8	46.5	60.9	np	np	47.2
June Quarter	43.6	40.4	52.5	39.2	45.9	38.4	36.4	49.8	44.4
September Quarter	44.5	38.6	58.0	38.3	45.5	31.3	43.7	53.6	45.1
December Quarter	47.1	44.4	53.0	41.2	46.4	42.3	31.1	51.4	47.0
<b>2010</b>									
March Quarter	46.7	45.9	45.1	43.6	45.7	54.7	26.1	57.7	46.2

np not available for publication but included in totals where applicable, unless otherwise indicated

Period	New South Wales	Victoria	Queensland	South Australia	Western Australia	Tasmania	Northern Territory	Australian Capital Territory	Australia
GUEST NIGHTS OCCUPIED ('000)									
<b>2009</b>									
March Quarter	451.3	318.9	341.6	82.4	109.0	111.0	np	np	1 422.4
June Quarter	407.2	273.1	355.6	72.6	102.4	64.4	8.4	2.3	1 285.9
September Quarter	434.9	265.4	409.8	75.1	100.6	52.2	9.9	2.1	1 350.1
December Quarter	452.3	305.3	389.3	79.4	106.9	72.1	5.6	1.9	1 412.9
<b>2010</b>									
March Quarter	437.7	316.8	318.2	79.7	97.9	96.1	4.7	2.4	1 353.6
BED OCCUPANCY RATE (%)									
<b>2009</b>									
March Quarter	29.9	29.7	30.1	27.2	31.2	44.8	np	np	30.5
June Quarter	26.5	25.0	30.8	23.6	30.7	26.2	23.8	21.3	27.3
September Quarter	27.9	24.5	35.1	24.2	29.7	20.7	26.5	27.1	28.4
December Quarter	29.7	28.7	32.6	25.5	31.7	29.0	15.6	25.1	29.9
<b>2010</b>									
March Quarter	29.5	30.6	27.0	27.1	30.1	38.5	13.4	30.0	29.4
GUEST ARRIVALS ('000)									
<b>2009</b>									
March Quarter	242.0	186.1	155.9	44.8	43.5	62.6	np	np	740.5
June Quarter	228.1	159.4	173.7	40.5	41.1	36.4	5.5	1.5	686.1
September Quarter	241.0	154.1	197.6	41.6	41.6	29.8	6.2	1.1	713.0
December Quarter	248.8	181.8	181.4	43.0	44.7	40.8	2.6	1.1	744.3
<b>2010</b>									
March Quarter	234.3	182.3	149.1	42.9	40.0	54.8	3.2	1.3	707.8
AVERAGE LENGTH OF STAY (days)									
<b>2009</b>									
March Quarter	1.9	1.7	2.2	1.8	2.5	1.8	np	np	1.9
June Quarter	1.8	1.7	2.0	1.8	2.5	1.8	1.5	1.5	1.9
September Quarter	1.8	1.7	2.1	1.8	2.4	1.8	1.6	1.9	1.9
December Quarter	1.8	1.7	2.1	1.8	2.4	1.8	2.1	1.8	1.9
<b>2010</b>									
March Quarter	1.9	1.7	2.1	1.9	2.4	1.8	1.5	1.9	1.9
TAKINGS FROM ACCOMMODATION (\$'000)									
<b>2009</b>									
March Quarter	25 323	17 730	17 211	4 327	7 242	6 913	np	np	79 626
June Quarter	22 568	15 174	18 301	3 904	6 858	4 129	968	154	72 054
September Quarter	25 018	15 196	20 966	3 918	6 877	3 311	1 305	120	76 712
December Quarter	26 294	17 284	20 025	4 122	6 969	4 808	401	112	80 015
<b>2010</b>									
March Quarter	26 219	18 064	16 929	4 378	6 806	6 348	405	119	79 269
AVERAGE TAKINGS PER ROOM NIGHT OCCUPIED (\$)									
<b>2009</b>									
March Quarter	105.28	104.66	96.14	88.73	144.13	124.47	np	np	106.36
June Quarter	97.91	99.83	95.28	86.98	142.97	120.76	205.90	82.59	101.75
September Quarter	103.87	104.92	97.00	88.62	144.74	115.22	227.04	81.28	105.15
December Quarter	106.31	104.60	100.97	87.90	146.65	123.88	104.06	78.66	106.77
<b>2010</b>									
March Quarter	109.32	108.31	101.07	92.59	149.42	130.40	130.70	76.59	110.05

np not available for publication but included in totals where applicable, unless otherwise indicated



<i>Period</i>	<i>New South Wales</i>	<i>Victoria</i>	<i>Queensland</i>	<i>South Australia</i>	<i>Western Australia</i>	<i>Tasmania</i>	<i>Northern Territory</i>	<i>Australian Capital Territory</i>	<i>Australia</i>
AVERAGE TAKINGS PER ROOM NIGHT AVAILABLE (\$)									
<b>2009</b>									
March Quarter	48.54	47.16	47.90	37.98	67.07	75.76	np	np	50.24
June Quarter	42.67	40.28	50.00	34.07	65.68	46.33	74.89	41.15	45.14
September Quarter	46.25	40.54	56.25	33.96	65.80	36.09	99.23	43.53	47.47
December Quarter	50.04	46.43	53.49	36.21	67.98	52.37	32.32	40.47	50.15
<b>2010</b>									
March Quarter	51.04	49.75	45.63	40.36	68.32	71.39	34.15	44.23	50.83

np not available for publication but included in totals where applicable, unless otherwise indicated

<i>Period</i>	<i>New South Wales</i>	<i>Victoria</i>	<i>Queensland</i>	<i>South Australia</i>	<i>Western Australia</i>	<i>Tasmania</i>	<i>Northern Territory</i>	<i>Australian Capital Territory</i>	<i>Australia</i>
<b>ESTABLISHMENTS (no.)</b>									
<b>2009</b>									
March Quarter	1 428	813	1 138	263	352	153	98	56	4 301
June Quarter	1 422	813	1 135	262	351	156	97	56	4 292
September Quarter	1 416	819	1 143	262	353	155	97	56	4 301
December Quarter	1 425	819	1 142	264	353	155	97	55	4 310
<b>2010</b>									
March Quarter	1 419	823	1 136	262	351	154	96	54	4 295
<b>ROOMS (no.)</b>									
<b>2009</b>									
March Quarter	71 466	39 439	62 041	12 069	21 634	6 614	7 411	5 059	225 733
June Quarter	71 229	39 548	61 876	12 086	21 718	6 660	7 359	5 105	225 581
September Quarter	70 990	40 189	61 612	12 060	21 955	6 621	7 347	5 100	225 874
December Quarter	71 245	40 246	61 663	12 138	22 035	6 654	7 386	5 067	226 434
<b>2010</b>									
March Quarter	71 739	40 817	61 534	12 097	22 045	6 658	7 377	4 964	227 231
<b>BED SPACES (no.)</b>									
<b>2009</b>									
March Quarter	198 519	107 016	191 979	32 973	57 831	18 528	20 701	14 844	642 391
June Quarter	197 480	107 573	191 513	33 134	57 602	18 593	21 025	15 057	641 977
September Quarter	195 811	108 050	188 620	33 012	58 507	18 603	21 027	14 497	638 127
December Quarter	196 176	109 101	188 553	33 175	58 724	18 748	21 163	14 499	640 139
<b>2010</b>									
March Quarter	197 758	110 046	187 634	33 081	58 394	18 812	20 885	14 232	640 842
<b>PERSONS EMPLOYED (no.)</b>									
<b>2009</b>									
March Quarter	31 759	21 922	30 017	7 152	10 715	4 842	3 209	2 523	112 139
June Quarter	31 550	21 302	29 693	6 933	10 471	4 660	3 190	2 327	110 126
September Quarter	31 400	21 775	30 115	6 997	10 717	4 558	3 335	2 476	111 373
December Quarter	31 196	21 883	30 142	6 993	10 452	4 702	3 063	2 505	110 936
<b>2010</b>									
March Quarter	30 925	22 214	29 574	7 166	10 506	4 640	2 993	2 518	110 536
<b>ROOM NIGHTS OCCUPIED ('000)</b>									
<b>2009</b>									
March Quarter	4 015.1	2 274.8	3 246.4	678.7	1 318.5	446.9	321.8	321.2	12 623.6
June Quarter	3 704.6	2 119.0	3 243.1	655.8	1 253.4	333.1	442.3	311.6	12 063.0
September Quarter	3 997.5	2 181.0	3 810.6	679.9	1 287.5	306.9	502.5	340.6	13 106.5
December Quarter	4 284.7	2 350.7	3 622.3	695.5	1 273.3	387.5	394.9	334.0	13 343.1
<b>2010</b>									
March Quarter	4 184.8	2 385.9	3 172.9	707.3	1 254.5	435.3	341.6	358.1	12 840.5
<b>Year ended March 2009</b>	16 031.0	8 977.8	14 203.9	2 703.8	5 356.5	1 443.4	1 627.9	1 303.7	51 648.0
<b>Year ended March 2010</b>	16 171.7	9 036.7	13 848.9	2 738.6	5 068.7	1 462.9	1 681.4	1 344.3	51 353.1

<i>Period</i>	<i>New South Wales</i>	<i>Victoria</i>	<i>Queensland</i>	<i>South Australia</i>	<i>Western Australia</i>	<i>Tasmania</i>	<i>Northern Territory</i>	<i>Australian Capital Territory</i>	<i>Australia</i>
<b>ROOM OCCUPANCY RATE (%)</b>									
<b>2009</b>									
March Quarter	63.5	65.5	58.3	62.5	68.1	75.1	49.7	70.6	62.9
June Quarter	57.7	59.7	57.6	59.6	63.4	55.1	66.3	67.5	59.1
September Quarter	61.3	59.1	67.3	61.3	63.7	50.4	74.3	72.6	63.1
December Quarter	66.5	64.8	63.9	62.3	62.8	63.3	58.7	71.7	64.7
<b>2010</b>									
March Quarter	65.9	66.2	57.4	65.0	63.2	72.7	52.2	80.2	63.4
<b>Year ended March 2009</b>	62.4	64.1	63.7	62.3	68.2	60.0	64.2	70.2	63.8
<b>Year ended March 2010</b>	62.8	62.4	61.6	62.0	63.3	60.3	62.9	72.9	62.6
<b>GUEST NIGHTS OCCUPIED ('000)</b>									
<b>2009</b>									
March Quarter	7 089.5	3 883.4	6 323.8	1 121.0	2 196.9	853.7	515.9	510.8	22 495.0
June Quarter	6 302.7	3 589.9	6 069.0	1 051.5	2 032.7	603.8	725.1	499.9	20 874.5
September Quarter	6 974.4	3 768.3	7 307.8	1 087.2	2 081.1	544.7	883.9	570.1	23 217.5
December Quarter	7 556.2	4 026.2	7 109.6	1 141.4	2 121.7	703.6	649.8	544.2	23 852.6
<b>2010</b>									
March Quarter	7 352.2	4 097.4	6 170.5	1 162.1	2 105.7	815.9	548.5	611.7	22 864.0
<b>Year ended March 2009</b>	27 488.2	14 966.3	27 117.7	4 327.1	8 676.7	2 632.8	2 686.7	2 115.0	90 010.6
<b>Year ended March 2010</b>	28 185.4	15 481.8	26 656.8	4 442.3	8 341.1	2 668.1	2 807.3	2 225.9	90 808.6
<b>BED OCCUPANCY RATE (%)</b>									
<b>2009</b>									
March Quarter	40.6	41.6	36.7	37.8	42.5	51.2	28.4	38.2	39.5
June Quarter	35.5	37.5	34.8	34.9	38.8	35.7	38.0	36.7	36.0
September Quarter	38.8	38.0	42.2	35.8	38.7	31.8	45.7	42.7	39.6
December Quarter	42.8	41.4	41.0	37.4	39.3	40.8	33.7	40.8	41.0
<b>2010</b>									
March Quarter	42.3	42.6	36.6	39.0	40.1	48.2	29.6	47.8	40.2
<b>Year ended March 2009</b>	38.7	39.2	39.3	36.4	41.1	39.0	36.5	38.8	39.0
<b>Year ended March 2010</b>	39.8	39.9	38.7	36.8	39.2	39.1	36.8	41.9	39.2
<b>GUEST ARRIVALS ('000)</b>									
<b>2009</b>									
March Quarter	3 283.8	1 773.5	2 318.6	548.8	861.2	440.3	250.9	236.5	9 713.7
June Quarter	3 093.3	1 672.8	2 363.2	528.6	829.9	308.0	325.5	239.9	9 361.3
September Quarter	3 388.4	1 776.6	2 757.2	561.7	862.5	275.7	410.3	282.6	10 315.0
December Quarter	3 604.8	1 871.7	2 604.4	598.5	870.7	360.2	294.7	261.2	10 466.3
<b>2010</b>									
March Quarter	3 414.4	1 862.5	2 247.1	550.4	833.8	414.3	250.6	274.4	9 847.6
<b>Year ended March 2009</b>	13 242.3	7 103.0	10 171.2	2 173.3	3 543.2	1 374.9	1 256.1	993.3	39 857.3
<b>Year ended March 2010</b>	13 501.0	7 183.6	9 972.0	2 239.1	3 396.9	1 358.3	1 281.2	1 058.1	39 990.1

<i>Period</i>	<i>New South Wales</i>	<i>Victoria</i>	<i>Queensland</i>	<i>South Australia</i>	<i>Western Australia</i>	<i>Tasmania</i>	<i>Northern Territory</i>	<i>Australian Capital Territory</i>	<i>Australia</i>
<b>AVERAGE LENGTH OF STAY (days)</b>									
<b>2009</b>									
March Quarter	2.2	2.2	2.7	2.0	2.6	1.9	2.1	2.2	2.3
June Quarter	2.0	2.1	2.6	2.0	2.4	2.0	2.2	2.1	2.2
September Quarter	2.1	2.1	2.7	1.9	2.4	2.0	2.2	2.0	2.3
December Quarter	2.1	2.2	2.7	1.9	2.4	2.0	2.2	2.1	2.3
<b>2010</b>									
March Quarter	2.2	2.2	2.7	2.1	2.5	2.0	2.2	2.2	2.3
<b>Year ended March 2009</b>	2.1	2.1	2.7	2.0	2.4	1.9	2.1	2.1	2.3
<b>Year ended March 2010</b>	2.1	2.2	2.7	2.0	2.5	2.0	2.2	2.1	2.3
<b>TAKINGS FROM ACCOMMODATION (\$'000)</b>									
<b>2009</b>									
March Quarter	623 724	367 654	474 153	94 338	213 398	60 951	41 988	52 578	1 928 783
June Quarter	524 913	318 466	451 330	84 794	197 903	42 944	70 291	48 632	1 739 272
September Quarter	581 185	338 388	542 759	86 183	203 614	37 826	86 156	54 502	1 930 613
December Quarter	667 881	365 595	538 195	93 659	204 106	51 471	55 316	54 317	2 030 540
<b>2010</b>									
March Quarter	661 848	381 164	464 352	99 665	204 677	58 717	42 735	60 812	1 973 969
<b>Year ended March 2009</b>	2 478 997	1 422 568	2 061 550	359 088	855 552	188 900	244 045	215 233	7 825 933
<b>Year ended March 2010</b>	2 435 827	1 403 613	1 996 637	364 301	810 299	190 958	254 497	218 263	7 674 394
<b>AVERAGE TAKINGS PER ROOM NIGHT OCCUPIED (\$)</b>									
<b>2009</b>									
March Quarter	155.34	161.62	146.05	139.00	161.85	136.37	130.47	163.68	152.79
June Quarter	141.69	150.29	139.17	129.29	157.89	128.92	158.91	156.07	144.18
September Quarter	145.39	155.15	142.43	126.76	158.15	123.24	171.45	160.04	147.30
December Quarter	155.87	155.53	148.58	134.66	160.30	132.82	140.06	162.61	152.18
<b>2010</b>									
March Quarter	158.15	159.76	146.35	140.90	163.16	134.88	125.11	169.82	153.73
<b>Year ended March 2009</b>	154.64	158.45	145.14	132.81	159.72	130.87	149.92	165.09	151.52
<b>Year ended March 2010</b>	150.62	155.32	144.17	133.02	159.86	130.54	151.36	162.36	149.44
<b>AVERAGE TAKINGS PER ROOM NIGHT AVAILABLE (\$)</b>									
<b>2009</b>									
March Quarter	98.63	105.81	85.21	86.90	110.14	102.39	64.81	115.48	96.03
June Quarter	81.75	89.71	80.22	77.10	100.16	71.00	105.33	105.27	85.23
September Quarter	89.13	91.63	95.87	77.68	100.81	62.10	127.46	116.16	93.00
December Quarter	103.62	100.82	94.92	83.87	100.73	84.08	82.17	116.52	98.39
<b>2010</b>									
March Quarter	104.24	105.72	84.03	91.59	103.16	97.99	65.25	136.12	97.46
<b>Year ended March 2009</b>	96.43	101.60	92.51	82.72	108.92	78.53	96.19	115.85	96.63
<b>Year ended March 2010</b>	94.64	96.97	88.80	82.53	101.21	78.73	95.27	118.36	93.53

Period	New South Wales	Victoria	Queensland	South Australia	Western Australia	Tasmania	Northern Territory	Australian Capital Territory	Australia
ESTABLISHMENTS (no.)									
<b>2009</b>									
March Quarter	2 025	1 256	1 547	399	495	274	112	59	6 167
June Quarter	2 013	1 243	1 542	396	486	274	112	60	6 126
September Quarter	2 008	1 239	1 552	394	487	273	112	59	6 124
December Quarter	2 012	1 238	1 554	393	484	272	112	58	6 123
<b>2010</b>									
March Quarter	2 006	1 238	1 554	390	483	271	110	57	6 109
ROOMS (no.)									
<b>2009</b>									
March Quarter	77 390	43 727	66 075	13 350	22 872	7 638	np	np	243 689
June Quarter	77 097	43 731	65 910	13 345	22 886	7 658	7 501	5 146	243 274
September Quarter	76 885	44 276	65 672	13 314	23 091	7 627	7 490	5 130	243 485
December Quarter	77 075	44 353	65 763	13 381	23 164	7 658	7 529	5 097	244 020
<b>2010</b>									
March Quarter	77 570	44 906	65 690	13 317	23 187	7 654	7 512	4 994	244 830
BED SPACES (no.)									
<b>2009</b>									
March Quarter	215 731	119 336	204 716	36 383	61 803	21 310	np	np	695 287
June Quarter	214 599	119 737	204 279	36 510	61 317	21 349	21 412	15 175	694 378
September Quarter	212 804	119 858	201 338	36 387	62 185	21 360	21 434	14 582	689 948
December Quarter	213 168	120 900	201 613	36 574	62 448	21 471	21 571	14 582	692 327
<b>2010</b>									
March Quarter	214 640	121 787	200 845	36 390	62 144	21 608	21 284	14 322	693 020
PERSONS EMPLOYED (no.)									
<b>2009</b>									
March Quarter	34 556	24 369	31 966	8 829	11 581	5 621	np	np	122 727
June Quarter	34 286	23 752	31 709	8 575	11 285	5 418	3 253	2 375	120 653
September Quarter	34 252	24 221	32 257	8 648	11 543	5 297	3 395	2 495	122 108
December Quarter	34 061	24 287	32 225	8 623	11 292	5 466	3 131	2 518	121 603
<b>2010</b>									
March Quarter	33 671	24 607	31 646	8 800	11 335	5 391	3 059	2 536	121 045
ROOM NIGHTS OCCUPIED ('000)									
<b>2009</b>									
March Quarter	4 255.7	2 444.2	3 425.5	727.5	1 368.8	502.5	np	np	13 372.3
June Quarter	3 935.1	2 271.0	3 435.2	700.7	1 301.4	367.3	447.0	313.5	12 771.2
September Quarter	4 238.4	2 325.8	4 026.7	724.1	1 335.0	335.7	508.3	342.0	13 836.0
December Quarter	4 532.1	2 515.9	3 820.6	742.4	1 320.8	426.3	398.8	335.4	14 092.5
<b>2010</b>									
March Quarter	4 424.7	2 552.7	3 340.4	754.6	1 300.0	484.0	344.7	359.6	13 560.8
ROOM OCCUPANCY RATE (%)									
<b>2009</b>									
March Quarter	62.2	63.5	57.8	60.6	66.9	73.2	np	np	61.7
June Quarter	56.6	57.8	57.3	57.7	62.6	52.9	65.7	67.3	58.0
September Quarter	60.0	57.2	66.7	59.1	62.8	47.9	73.8	72.5	61.8
December Quarter	65.0	62.9	63.2	60.3	62.0	60.6	58.2	71.5	63.4
<b>2010</b>									
March Quarter	64.5	64.3	56.6	63.1	62.4	70.3	51.7	80.0	62.2

np not available for publication but included in totals where applicable, unless otherwise indicated

Period	New South Wales	Victoria	Queensland	South Australia	Western Australia	Tasmania	Northern Territory	Australian Capital Territory	Australia
GUEST NIGHTS OCCUPIED ('000)									
<b>2009</b>									
March Quarter	7 540.8	4 202.3	6 665.4	1 203.4	2 305.9	964.7	np	np	23 917.5
June Quarter	6 709.9	3 863.0	6 424.5	1 124.1	2 135.1	668.2	733.4	502.2	22 160.4
September Quarter	7 409.3	4 033.7	7 717.6	1 162.3	2 181.7	596.9	893.8	572.2	24 567.6
December Quarter	8 008.5	4 331.5	7 498.8	1 220.8	2 228.6	775.7	655.4	546.1	25 265.5
<b>2010</b>									
March Quarter	7 789.9	4 414.2	6 488.7	1 241.9	2 203.5	912.0	553.3	614.1	24 217.6
BED OCCUPANCY RATE (%)									
<b>2009</b>									
March Quarter	39.8	40.4	36.3	36.8	41.8	50.4	np	np	38.8
June Quarter	34.7	36.2	34.6	33.8	38.3	34.5	37.8	36.5	35.3
September Quarter	37.9	36.6	41.7	34.7	38.1	30.4	45.3	42.7	38.8
December Quarter	41.8	40.2	40.5	36.3	38.8	39.3	33.4	40.7	40.2
<b>2010</b>									
March Quarter	41.3	41.4	36.0	38.0	39.5	46.9	29.3	47.6	39.4
GUEST ARRIVALS ('000)									
<b>2009</b>									
March Quarter	3 525.8	1 959.6	2 474.6	593.6	904.7	502.9	np	np	10 454.2
June Quarter	3 321.4	1 832.2	2 536.9	569.1	871.0	344.4	331.0	241.4	10 047.4
September Quarter	3 629.5	1 930.6	2 954.8	603.3	904.1	305.5	416.5	283.7	11 028.0
December Quarter	3 853.6	2 053.5	2 785.9	641.5	915.3	401.1	297.4	262.3	11 210.6
<b>2010</b>									
March Quarter	3 648.7	2 044.8	2 396.2	593.3	873.8	469.1	253.8	275.7	10 555.4
AVERAGE LENGTH OF STAY (days)									
<b>2009</b>									
March Quarter	2.1	2.1	2.7	2.0	2.5	1.9	np	np	2.3
June Quarter	2.0	2.1	2.5	2.0	2.5	1.9	2.2	2.1	2.2
September Quarter	2.0	2.1	2.6	1.9	2.4	2.0	2.1	2.0	2.2
December Quarter	2.1	2.1	2.7	1.9	2.4	1.9	2.2	2.1	2.3
<b>2010</b>									
March Quarter	2.1	2.2	2.7	2.1	2.5	1.9	2.2	2.2	2.3
TAKINGS FROM ACCOMMODATION (\$'000)									
<b>2009</b>									
March Quarter	649 046	385 384	491 364	98 665	220 640	67 864	np	np	2 008 410
June Quarter	547 481	333 639	469 630	88 698	204 761	47 073	71 258	48 785	1 811 327
September Quarter	606 204	353 585	563 726	90 101	210 491	41 136	87 461	54 622	2 007 325
December Quarter	694 175	382 879	558 221	97 781	211 074	56 279	55 717	54 429	2 110 555
<b>2010</b>									
March Quarter	688 068	399 228	481 281	104 043	211 482	65 065	43 140	60 931	2 053 238
AVERAGE TAKINGS PER ROOM NIGHT OCCUPIED (\$)									
<b>2009</b>									
March Quarter	152.51	157.67	143.44	135.63	161.20	135.06	np	np	150.19
June Quarter	139.13	146.91	136.71	126.58	157.34	128.16	159.40	155.63	141.83
September Quarter	143.03	152.03	140.00	124.43	157.67	122.56	172.08	159.70	145.08
December Quarter	153.17	152.18	146.11	131.70	159.81	132.01	139.71	162.26	149.76
<b>2010</b>									
March Quarter	155.51	156.39	144.08	137.87	162.68	134.43	125.16	169.42	151.41

np not available for publication but included in totals where applicable, unless otherwise indicated

<i>Period</i>	<i>New South Wales</i>	<i>Victoria</i>	<i>Queensland</i>	<i>South Australia</i>	<i>Western Australia</i>	<i>Tasmania</i>	<i>Northern Territory</i>	<i>Australian Capital Territory</i>	<i>Australia</i>
AVERAGE TAKINGS PER ROOM NIGHT AVAILABLE (\$)									
<b>2009</b>									
March Quarter	94.81	100.08	82.94	82.25	107.86	98.85	np	np	92.68
June Quarter	78.78	84.97	78.37	73.04	98.43	67.83	104.75	104.76	82.32
September Quarter	85.85	86.92	93.42	73.56	99.08	58.69	126.92	115.74	89.71
December Quarter	99.58	95.75	92.35	79.46	99.15	79.94	81.27	116.07	94.93
<b>2010</b>									
March Quarter	100.26	100.60	81.61	86.94	101.50	94.55	64.70	135.57	94.13

np not available for publication but included in totals where applicable, unless otherwise indicated

Period	New South Wales	Victoria	Queensland	South Australia	Western Australia	Tasmania	Northern Territory	Australian Capital Territory	Australia
ESTABLISHMENTS (no.)									
<b>2009</b>									
March Quarter	434	351	253	135	172	45	49	3	1 442
June Quarter	434	346	253	135	172	46	49	3	1 438
September Quarter	434	343	253	135	169	44	50	3	1 431
December Quarter	432	345	253	132	167	45	49	3	1 426
<b>2010</b>									
March Quarter	432	347	251	132	168	45	49	3	1 427
ON-SITE VANS (no.)									
<b>2009</b>									
March Quarter	6 777	2 709	1 625	458	1 362	np	np	np	13 244
June Quarter	6 991	2 589	1 816	421	1 417	np	np	np	13 577
September Quarter	6 756	2 536	1 658	np	1 374	np	np	np	13 111
December Quarter	6 700	2 581	1 680	420	1 289	np	np	np	13 046
<b>2010</b>									
March Quarter	6 785	2 432	1 568	429	1 238	np	np	np	12 824
OTHER POWERED SITES (no.)									
<b>2009</b>									
March Quarter	39 508	32 714	18 794	11 271	14 782	np	np	np	124 487
June Quarter	39 453	32 263	18 775	11 369	15 022	np	np	np	124 528
September Quarter	39 579	32 256	19 048	np	14 649	np	np	np	124 342
December Quarter	39 139	32 397	18 928	10 878	14 639	np	np	np	123 556
<b>2010</b>									
March Quarter	39 160	32 617	18 768	10 897	14 635	np	np	np	123 709
UNPOWERED SITES (no.)									
<b>2009</b>									
March Quarter	10 906	9 086	5 280	4 008	3 376	np	np	np	37 513
June Quarter	10 576	9 208	5 055	3 995	3 382	np	np	np	37 055
September Quarter	10 236	8 620	4 830	np	3 076	np	np	np	35 089
December Quarter	10 131	7 603	4 712	3 376	3 015	np	np	np	33 255
<b>2010</b>									
March Quarter	10 087	7 518	4 507	3 332	2 982	np	np	np	32 827
CABINS FLATS, UNITS AND VILLAS (no.)									
<b>2009</b>									
March Quarter	10 165	5 485	4 738	2 537	3 102	np	np	np	27 828
June Quarter	10 309	5 385	4 773	2 526	2 890	np	np	np	27 692
September Quarter	10 245	5 473	4 775	np	2 870	np	np	np	27 674
December Quarter	10 378	5 574	4 767	2 560	2 877	np	np	np	27 942
<b>2010</b>									
March Quarter	10 457	5 588	4 960	2 643	2 941	np	np	np	28 336

np not available for publication but included in totals where applicable, unless otherwise indicated

(a) Comprising establishments with 40 or more powered sites and cabins, flats, units and villas.



Period	New South Wales	Victoria	Queensland	South Australia	Western Australia	Tasmania	Northern Territory	Australian Capital Territory	Australia
TOTAL CAPACITY (no.)									
<b>2009</b>									
March Quarter	67 356	49 994	30 437	18 274	22 622	np	np	np	203 072
June Quarter	67 329	49 445	30 419	18 311	22 711	np	np	np	202 852
September Quarter	66 816	48 885	30 311	np	21 969	np	np	np	200 216
December Quarter	66 348	48 155	30 087	17 234	21 820	np	np	np	197 799
<b>2010</b>									
March Quarter	66 489	48 155	29 803	17 301	21 796	np	np	np	197 696
PERSONS EMPLOYED (no.)									
<b>2009</b>									
March Quarter	2 995	1 811	1 498	804	1 224	np	np	np	9 174
June Quarter	2 847	1 714	1 536	802	1 292	np	np	np	9 163
September Quarter	2 898	1 663	1 582	np	1 260	np	np	np	9 109
December Quarter	3 068	1 847	1 526	816	1 214	np	np	np	9 315
<b>2010</b>									
March Quarter	3 008	1 844	1 542	815	1 211	np	np	np	9 214
SITES OCCUPIED BY LONG-TERM GUESTS (no.)									
<b>2009</b>									
March Quarter	6 166	2 891	4 871	991	3 295	np	np	np	19 120
June Quarter	6 432	2 929	5 238	912	3 454	np	np	np	19 966
September Quarter	6 691	2 977	5 026	np	3 269	np	np	np	19 920
December Quarter	6 093	3 029	4 531	876	3 057	np	np	np	18 571
<b>2010</b>									
March Quarter	6 175	3 042	4 710	815	3 244	np	np	np	18 989
OTHER SITES PERMANENTLY RESERVED (no.)									
<b>2009</b>									
March Quarter	18 529	14 105	973	2 315	1 911	np	np	np	38 689
June Quarter	18 159	13 245	1 038	2 167	1 697	np	np	np	37 229
September Quarter	17 770	13 817	1 251	np	1 815	np	np	np	37 634
December Quarter	17 900	14 032	1 375	2 136	1 722	np	np	np	38 085
<b>2010</b>									
March Quarter	17 639	14 182	1 233	2 156	1 711	np	np	np	37 855
SITE NIGHTS OCCUPIED ('000)									
<b>2009</b>									
March Quarter	3 711.8	2 446.1	1 149.9	756.7	952.5	np	np	np	9 410.7
June Quarter	3 371.5	2 102.0	1 444.7	663.6	1 028.3	np	np	np	9 101.9
September Quarter	3 292.7	1 984.2	1 799.0	np	1 152.2	np	np	np	9 404.2
December Quarter	3 589.9	2 203.9	1 303.5	657.5	922.8	np	np	np	9 054.9
<b>2010</b>									
March Quarter	3 619.9	2 459.3	1 081.6	728.8	901.1	np	np	np	9 196.6

np not available for publication but included in totals where applicable, unless otherwise indicated

(a) Comprising establishments with 40 or more powered sites and cabins, flats, units and villas.

Period	New South Wales	Victoria	Queensland	South Australia	Western Australia	Tasmania	Northern Territory	Australian Capital Territory	Australia
--------	-----------------	----------	------------	-----------------	-------------------	----------	--------------------	------------------------------	-----------

## SITE OCCUPANCY RATE (%)

<b>2009</b>									
March Quarter	61.2	54.6	42.1	46.0	46.8	np	np	np	51.6
June Quarter	55.1	48.4	52.2	39.8	49.8	np	np	np	49.8
September Quarter	53.6	46.0	64.5	np	57.2	np	np	np	51.6
December Quarter	58.8	50.6	47.1	41.5	46.0	np	np	np	50.0
<b>2010</b>									
March Quarter	60.8	56.7	40.3	46.8	46.2	np	np	np	51.9

## TAKINGS FROM ACCOMMODATION (\$'000)

<b>2009</b>									
March Quarter	92 374	47 720	34 622	21 133	30 685	np	np	np	240 294
June Quarter	66 653	33 816	44 546	17 429	34 002	np	np	np	213 016
September Quarter	67 112	35 844	58 274	np	36 704	np	np	np	233 777
December Quarter	92 507	44 781	43 476	19 643	30 871	np	np	np	244 662
<b>2010</b>									
March Quarter	97 385	51 486	35 064	22 347	31 315	np	np	np	252 915

np not available for publication but included in totals where applicable, unless otherwise indicated

(a) Comprising establishments with 40 or more powered sites and cabins, flats, units and villas.

Period	New South Wales	Victoria	Queensland	South Australia	Western Australia	Tasmania	Northern Territory	Australian Capital Territory	Australia
--------	-----------------	----------	------------	-----------------	-------------------	----------	--------------------	------------------------------	-----------

## ESTABLISHMENTS (no.)

<b>2009</b>									
March Quarter	72	42	70	8	26	1	2	—	221
June Quarter	70	42	69	8	25	1	2	—	217
September Quarter	70	42	67	8	25	1	2	—	215
December Quarter	70	42	67	8	25	1	2	—	215
<b>2010</b>									
March Quarter	70	42	67	7	25	1	2	—	214

## ON-SITE VANS (no.)

<b>2009</b>									
March Quarter	1 074	574	1 781	83	357	np	np	—	3 878
June Quarter	1 098	570	1 691	78	325	np	np	—	3 769
September Quarter	1 081	562	1 606	np	329	np	np	—	3 761
December Quarter	1 153	599	1 633	176	320	np	np	—	3 888
<b>2010</b>									
March Quarter	1 119	583	1 582	175	302	np	np	—	3 768

## OTHER POWERED SITES (no.)

<b>2009</b>									
March Quarter	4 896	3 449	4 867	594	1 938	np	np	—	16 003
June Quarter	4 725	3 522	4 896	590	1 939	np	np	—	15 951
September Quarter	4 734	3 503	4 696	np	1 982	np	np	—	15 685
December Quarter	4 561	3 364	4 633	490	1 981	np	np	—	15 322
<b>2010</b>									
March Quarter	4 571	3 380	4 640	415	1 986	np	np	—	15 285

## UNPOWERED SITES (no.)

<b>2009</b>									
March Quarter	652	383	466	69	133	np	np	—	1 802
June Quarter	612	331	440	63	126	np	np	—	1 634
September Quarter	631	313	417	np	96	np	np	—	1 590
December Quarter	652	316	433	71	121	np	np	—	1 655
<b>2010</b>									
March Quarter	659	349	432	59	119	np	np	—	1 680

## CABINS FLATS, UNITS AND VILLAS (no.)

<b>2009</b>									
March Quarter	2 680	1 433	1 909	477	689	np	np	—	7 229
June Quarter	2 761	1 411	1 914	477	691	np	np	—	7 295
September Quarter	2 727	1 458	1 876	np	665	np	np	—	7 229
December Quarter	2 742	1 548	1 872	467	650	np	np	—	7 318
<b>2010</b>									
March Quarter	2 742	1 582	1 914	469	687	np	np	—	7 433

— nil or rounded to zero (including null cells)

np not available for publication but included in totals where applicable, unless otherwise indicated

(a) Comprising establishments with 40 or more powered sites and cabins, flats, units and villas.

Period	New South Wales	Victoria	Queensland	South Australia	Western Australia	Tasmania	Northern Territory	Australian Capital Territory	Australia
TOTAL CAPACITY (no.)									
<b>2009</b>									
March Quarter	9 302	5 839	9 023	1 223	3 117	np	np	—	28 912
June Quarter	9 196	5 834	8 941	1 208	3 081	np	np	—	28 649
September Quarter	9 173	5 836	8 595	np	3 072	np	np	—	28 265
December Quarter	9 108	5 827	8 571	1 204	3 072	np	np	—	28 183
<b>2010</b>									
March Quarter	9 091	5 894	8 568	1 118	3 094	np	np	—	28 166
PERSONS EMPLOYED (no.)									
<b>2009</b>									
March Quarter	438	235	491	52	167	np	np	—	1 398
June Quarter	423	237	442	54	162	np	np	—	1 334
September Quarter	424	243	446	np	168	np	np	—	1 349
December Quarter	442	253	442	54	167	np	np	—	1 374
<b>2010</b>									
March Quarter	434	249	425	47	167	np	np	—	1 338
SITES OCCUPIED BY LONG-TERM GUESTS (no.)									
<b>2009</b>									
March Quarter	4 556	2 555	5 728	653	1 896	np	np	—	15 433
June Quarter	4 558	2 645	5 658	663	1 855	np	np	—	15 416
September Quarter	4 608	2 541	5 356	np	1 856	np	np	—	15 030
December Quarter	4 622	2 648	5 333	654	1 748	np	np	—	15 043
<b>2010</b>									
March Quarter	4 574	2 613	5 296	585	1 824	np	np	—	14 930
OTHER SITES PERMANENTLY RESERVED (no.)									
<b>2009</b>									
March Quarter	916	741	109	11	65	np	np	—	1 909
June Quarter	918	691	145	11	85	np	np	—	1 917
September Quarter	905	705	178	np	94	np	np	—	1 960
December Quarter	862	716	267	11	84	np	np	—	2 008
<b>2010</b>									
March Quarter	869	684	270	3	82	np	np	—	1 976
SITE NIGHTS OCCUPIED ('000)									
<b>2009</b>									
March Quarter	644.6	404.6	614.1	78.4	233.5	np	np	—	1 991.2
June Quarter	619.3	366.2	635.6	86.0	228.7	np	np	—	1 952.2
September Quarter	630.2	355.5	636.9	np	230.1	np	np	—	1 953.4
December Quarter	641.6	385.2	630.1	87.4	228.8	np	np	—	1 995.1
<b>2010</b>									
March Quarter	618.1	399.6	589.1	69.5	222.5	np	np	—	1 921.1

— nil or rounded to zero (including null cells)

np not available for publication but included in totals where applicable, unless otherwise indicated

(a) Comprising establishments with 40 or more powered sites and cabins, flats, units and villas.

Period	New South Wales	Victoria	Queensland	South Australia	Western Australia	Tasmania	Northern Territory	Australian Capital Territory	Australia
--------	-----------------	----------	------------	-----------------	-------------------	----------	--------------------	------------------------------	-----------

## SITE OCCUPANCY RATE (%)

<b>2009</b>									
March Quarter	77.0	77.0	75.6	71.2	83.2	np	np	—	76.5
June Quarter	74.0	69.0	78.1	78.3	81.6	np	np	—	74.9
September Quarter	74.7	66.2	80.6	np	81.4	np	np	—	75.1
December Quarter	76.6	71.9	79.9	78.9	81.0	np	np	—	76.9
<b>2010</b>									
March Quarter	75.5	75.3	76.4	69.1	79.9	np	np	—	75.8

## TAKINGS FROM ACCOMMODATION (\$'000)

<b>2009</b>									
March Quarter	14 168	7 078	13 655	2 106	7 069	np	np	—	44 528
June Quarter	12 380	6 271	13 791	2 129	6 413	np	np	—	41 456
September Quarter	12 093	7 350	14 825	np	7 564	np	np	—	44 684
December Quarter	14 453	7 526	14 963	2 556	7 879	np	np	—	47 818
<b>2010</b>									
March Quarter	14 783	7 695	13 930	2 022	7 599	np	np	—	46 559

— nil or rounded to zero (including null cells)

np not available for publication but included in totals where applicable, unless otherwise indicated

(a) Comprising establishments with 40 or more powered sites and cabins, flats, units and villas.

Period	New South Wales	Victoria	Queensland	South Australia	Western Australia	Tasmania	Northern Territory	Australian Capital Territory	Australia
ESTABLISHMENTS (no.)									
<b>2009</b>									
March Quarter	506	393	323	143	198	46	51	3	1 663
June Quarter	504	388	322	143	197	47	51	3	1 655
September Quarter	504	385	320	143	194	45	52	3	1 646
December Quarter	502	387	320	140	192	46	51	3	1 641
<b>2010</b>									
March Quarter	502	389	318	139	193	46	51	3	1 641
ON-SITE VANS (no.)									
<b>2009</b>									
March Quarter	7 851	3 283	3 406	541	1 719	169	np	np	17 122
June Quarter	8 089	3 159	3 507	499	1 742	np	87	np	17 346
September Quarter	7 837	3 098	3 264	632	1 703	np	88	np	16 872
December Quarter	7 853	3 180	3 313	596	1 609	np	83	np	16 934
<b>2010</b>									
March Quarter	7 904	3 015	3 150	604	1 540	226	np	np	16 592
OTHER POWERED SITES (no.)									
<b>2009</b>									
March Quarter	44 404	36 163	23 661	11 865	16 720	2 886	np	np	140 490
June Quarter	44 178	35 785	23 671	11 959	16 961	np	4 672	np	140 479
September Quarter	44 313	35 759	23 744	11 554	16 631	np	4 771	np	140 027
December Quarter	43 700	35 761	23 561	11 368	16 620	np	4 671	np	138 878
<b>2010</b>									
March Quarter	43 731	35 997	23 408	11 312	16 621	2 851	np	np	138 994
UNPOWERED SITES (no.)									
<b>2009</b>									
March Quarter	11 558	9 469	5 746	4 077	3 509	1 673	np	np	39 315
June Quarter	11 188	9 539	5 495	4 058	3 508	np	2 837	np	38 689
September Quarter	10 867	8 933	5 247	3 794	3 172	np	2 721	np	36 679
December Quarter	10 783	7 919	5 145	3 447	3 136	np	2 645	np	34 910
<b>2010</b>									
March Quarter	10 746	7 867	4 939	3 391	3 101	1 421	np	np	34 507
CABINS FLATS, UNITS AND VILLAS (no.)									
<b>2009</b>									
March Quarter	12 845	6 918	6 647	3 014	3 791	652	np	np	35 057
June Quarter	13 070	6 796	6 687	3 003	3 581	np	1 068	np	34 987
September Quarter	12 972	6 931	6 651	3 001	3 535	np	1 053	np	34 903
December Quarter	13 120	7 122	6 639	3 027	3 527	np	1 002	np	35 260
<b>2010</b>									
March Quarter	13 199	7 170	6 874	3 112	3 628	715	np	np	35 769

np not available for publication but included in totals where applicable, unless otherwise indicated

(a) Comprising establishments with 40 or more powered sites and cabins, flats, units and villas.

Period	New South Wales	Victoria	Queensland	South Australia	Western Australia	Tasmania	Northern Territory	Australian Capital Territory	Australia
TOTAL CAPACITY (no.)									
<b>2009</b>									
March Quarter	76 658	55 833	39 460	19 497	25 739	5 380	np	np	231 984
June Quarter	76 525	55 279	39 360	19 519	25 792	np	8 664	np	231 501
September Quarter	75 989	54 721	38 906	18 981	25 041	np	8 633	np	228 481
December Quarter	75 456	53 982	38 658	18 438	24 892	np	8 401	np	225 982
<b>2010</b>									
March Quarter	75 580	54 049	38 371	18 419	24 890	5 213	np	np	225 862
PERSONS EMPLOYED (no.)									
<b>2009</b>									
March Quarter	3 433	2 046	1 989	856	1 391	278	np	np	10 572
June Quarter	3 270	1 951	1 978	856	1 454	np	654	np	10 497
September Quarter	3 322	1 906	2 028	851	1 428	np	597	np	10 458
December Quarter	3 510	2 100	1 968	870	1 381	np	506	np	10 689
<b>2010</b>									
March Quarter	3 442	2 093	1 967	862	1 378	272	np	np	10 552
SITES OCCUPIED BY LONG-TERM GUESTS (no.)									
<b>2009</b>									
March Quarter	10 722	5 446	10 599	1 644	5 191	306	np	np	34 553
June Quarter	10 990	5 574	10 896	1 575	5 309	np	585	np	35 382
September Quarter	11 299	5 518	10 382	1 625	5 125	np	591	np	34 950
December Quarter	10 715	5 677	9 864	1 530	4 805	np	549	np	33 614
<b>2010</b>									
March Quarter	10 749	5 655	10 006	1 400	5 068	316	np	np	33 919
OTHER SITES PERMANENTLY RESERVED (no.)									
<b>2009</b>									
March Quarter	19 445	14 846	1 082	2 326	1 976	895	np	np	40 598
June Quarter	19 077	13 936	1 183	2 178	1 782	np	47	np	39 146
September Quarter	18 675	14 522	1 429	2 099	1 909	np	10	np	39 594
December Quarter	18 762	14 748	1 642	2 147	1 806	np	20	np	40 093
<b>2010</b>									
March Quarter	18 508	14 866	1 503	2 159	1 793	948	np	np	39 831
SITE NIGHTS OCCUPIED ('000)									
<b>2009</b>									
March Quarter	4 356.4	2 850.6	1 764.0	835.1	1 186.0	249.8	np	np	11 402.0
June Quarter	3 990.8	2 468.2	2 080.2	749.7	1 257.0	np	295.1	np	11 054.1
September Quarter	3 922.9	2 339.8	2 435.9	688.1	1 382.3	np	412.3	np	11 357.7
December Quarter	4 231.4	2 589.1	1 933.6	744.9	1 151.6	np	165.6	np	11 050.1
<b>2010</b>									
March Quarter	4 238.0	2 858.9	1 670.7	798.3	1 123.6	254.1	np	np	11 117.7

np not available for publication but included in totals where applicable, unless otherwise indicated

(a) Comprising establishments with 40 or more powered sites and cabins, flats, units and villas.

<i>Period</i>	<i>New South Wales</i>	<i>Victoria</i>	<i>Queensland</i>	<i>South Australia</i>	<i>Western Australia</i>	<i>Tasmania</i>	<i>Northern Territory</i>	<i>Australian Capital Territory</i>	<i>Australia</i>
---------------	--------------------------------	-----------------	-------------------	----------------------------	------------------------------	-----------------	-------------------------------	---	------------------

## SITE OCCUPANCY RATE (%)

<b>2009</b>									
March Quarter	63.1	56.9	49.8	47.6	51.2	52.5	np	np	54.7
June Quarter	57.3	50.6	58.1	42.2	53.6	np	37.4	np	52.9
September Quarter	56.2	48.2	68.1	39.4	60.2	np	51.9	np	54.6
December Quarter	61.0	52.9	54.4	44.0	50.3	np	21.5	np	53.4
<b>2010</b>									
March Quarter	62.6	58.8	48.4	48.2	50.4	54.5	np	np	54.9

## TAKINGS FROM ACCOMMODATION (\$'000)

<b>2009</b>									
March Quarter	106 542	54 798	48 278	23 240	37 754	7 863	np	np	284 822
June Quarter	79 033	40 087	58 336	19 558	40 414	np	11 879	np	254 472
September Quarter	79 204	43 194	73 100	17 532	44 268	np	16 759	np	278 461
December Quarter	106 960	52 307	58 440	22 199	38 749	np	6 939	np	292 479
<b>2010</b>									
March Quarter	112 169	59 181	48 994	24 369	38 915	8 304	np	np	299 474

np not available for publication but included in totals where applicable, unless otherwise indicated

(a) Comprising establishments with 40 or more powered sites and cabins, flats, units and villas.



	New South Wales	Victoria	Queensland	South Australia	Western Australia	Tasmania	Northern Territory	Australian Capital Territory	Australia
--	-----------------------	----------	------------	--------------------	----------------------	----------	-----------------------	------------------------------------	-----------

LETTING ENTITIES (a) (no.)

<b>2009</b>									
March Quarter	98	13	32	9	2	2	1	—	157
June Quarter	97	13	32	9	2	2	1	—	156
September Quarter	96	13	32	9	2	2	1	—	155
December Quarter	96	13	31	9	2	2	1	—	154
<b>2010</b>									
March Quarter	94	14	31	8	1	2	—	—	150

SINGLE BEDROOM HOLIDAY FLATS, UNITS AND HOUSES (no.)

<b>2009</b>									
March Quarter	423	110	182	6	np	np	np	—	736
June Quarter	363	64	141	6	np	np	np	—	589
September Quarter	377	68	129	12	np	np	np	—	600
December Quarter	390	70	173	12	np	np	np	—	659
<b>2010</b>									
March Quarter	348	93	219	12	np	np	—	—	675

MULTIPLE BEDROOM HOLIDAY FLATS, UNITS AND HOUSES (no.)

<b>2009</b>									
March Quarter	7 576	2 007	2 847	694	np	np	np	—	13 346
June Quarter	7 310	2 104	2 863	698	np	np	np	—	13 198
September Quarter	7 142	2 113	2 879	688	np	np	np	—	13 045
December Quarter	7 237	2 101	2 858	700	np	np	np	—	13 117
<b>2010</b>									
March Quarter	7 050	2 245	2 890	664	np	np	—	—	13 055

TOTAL HOLIDAY FLATS, UNITS AND HOUSES (no.)

<b>2009</b>									
March Quarter	7 999	2 117	3 029	700	np	np	np	—	14 082
June Quarter	7 673	2 168	3 004	704	np	np	np	—	13 787
September Quarter	7 519	2 181	3 008	700	np	np	np	—	13 645
December Quarter	7 627	2 171	3 031	712	np	np	np	—	13 776
<b>2010</b>									
March Quarter	7 398	2 338	3 109	676	np	np	—	—	13 730

BED SPACES (no.)

<b>2009</b>									
March Quarter	44 262	12 744	14 561	5 044	np	np	np	—	77 959
June Quarter	43 222	13 059	14 617	4 945	np	np	np	—	77 203
September Quarter	42 903	13 176	14 634	4 977	np	np	np	—	77 035
December Quarter	43 104	12 075	14 915	5 059	np	np	np	—	76 470
<b>2010</b>									
March Quarter	42 262	13 016	15 059	4 858	np	np	—	—	76 268

— nil or rounded to zero (including null cells)

np not available for publication but included in totals where applicable, unless otherwise indicated

(a) The number of managers, owners or real estate agents with 15 or more self-contained units.

	New South Wales	Victoria	Queensland	South Australia	Western Australia	Tasmania	Northern Territory	Australian Capital Territory	Australia
UNIT NIGHTS OCCUPIED ('000)									
<b>2009</b>									
March Quarter	262.8	26.9	137.5	20.8	np	np	np	—	458.5
June Quarter	157.4	9.4	104.4	9.1	np	np	np	—	287.0
September Quarter	163.5	10.7	135.8	7.8	np	np	np	—	324.4
December Quarter	230.9	16.0	147.3	12.5	np	np	np	—	413.5
<b>2010</b>									
March Quarter	263.4	22.4	129.7	18.7	np	np	—	—	442.7
UNIT OCCUPANCY RATE (%)									
<b>2009</b>									
March Quarter	36.5	14.2	50.5	33.0	np	np	np	—	36.2
June Quarter	22.5	4.8	38.2	14.2	np	np	np	—	22.9
September Quarter	23.6	5.3	49.1	12.1	np	np	np	—	25.8
December Quarter	33.4	8.0	52.8	19.1	np	np	np	—	32.9
<b>2010</b>									
March Quarter	40.1	10.6	46.4	30.7	np	np	—	—	36.1
UNIT LETTINGS ('000)									
<b>2009</b>									
March Quarter	36.0	5.0	29.2	9.1	np	np	np	—	81.1
June Quarter	20.7	2.3	25.1	4.8	np	np	np	—	54.2
September Quarter	25.3	2.8	25.2	3.8	np	np	np	—	58.2
December Quarter	35.0	5.2	37.4	5.9	np	np	np	—	85.1
<b>2010</b>									
March Quarter	35.3	4.3	30.4	8.7	np	np	—	—	80.4
AVERAGE LENGTH OF STAY (days)									
<b>2009</b>									
March Quarter	7.3	5.4	4.7	2.3	np	np	np	—	5.7
June Quarter	7.6	4.0	4.2	1.9	np	np	np	—	5.3
September Quarter	6.5	3.8	5.4	2.0	np	np	np	—	5.6
December Quarter	6.6	3.1	3.9	2.1	np	np	np	—	4.9
<b>2010</b>									
March Quarter	7.5	5.1	4.3	2.1	np	np	—	—	5.5
TAKINGS FROM ACCOMMODATION (\$'000)									
<b>2009</b>									
March Quarter	31 765	5 055	14 496	2 636	np	np	np	—	55 063
June Quarter	13 954	1 586	10 566	904	np	np	np	—	27 587
September Quarter	16 729	1 984	15 937	673	np	np	np	—	35 936
December Quarter	28 196	2 636	18 869	1 414	np	np	np	—	51 862
<b>2010</b>									
March Quarter	33 732	3 243	13 855	2 341	np	np	—	—	54 076

— nil or rounded to zero (including null cells)

np not available for publication but included in totals where applicable, unless otherwise indicated

	New South Wales	Victoria	Queensland	South Australia	Western Australia	Tasmania	Northern Territory	Australian Capital Territory	Australia
--	-----------------------	----------	------------	--------------------	----------------------	----------	-----------------------	------------------------------------	-----------

LETTING ENTITIES (a) (no.)

<b>2009</b>									
March Quarter	59	20	315	7	20	6	2	3	432
June Quarter	59	20	313	7	20	7	2	3	431
September Quarter	60	20	306	7	20	6	2	3	424
December Quarter	61	21	305	7	20	7	3	3	427
<b>2010</b>									
March Quarter	61	20	302	10	23	6	3	3	428

SINGLE BEDROOM HOLIDAY FLATS, UNITS AND HOUSES (no.)

<b>2009</b>									
March Quarter	416	299	3 054	97	np	np	np	np	4 366
June Quarter	415	252	2 999	95	np	np	np	np	4 274
September Quarter	436	283	2 921	91	np	np	np	np	4 242
December Quarter	458	298	2 874	97	np	np	np	np	4 310
<b>2010</b>									
March Quarter	449	298	2 787	161	np	np	np	np	4 234

MULTIPLE BEDROOM HOLIDAY FLATS, UNITS AND HOUSES (no.)

<b>2009</b>									
March Quarter	1 238	763	7 750	135	np	np	np	np	10 876
June Quarter	1 221	801	7 830	134	np	np	np	np	10 971
September Quarter	1 308	802	7 734	136	np	np	np	np	10 948
December Quarter	1 316	843	7 810	131	np	np	np	np	11 147
<b>2010</b>									
March Quarter	1 336	775	7 648	197	np	np	np	np	11 055

TOTAL HOLIDAY FLATS, UNITS AND HOUSES (no.)

<b>2009</b>									
March Quarter	1 654	1 062	10 804	232	np	np	np	np	15 242
June Quarter	1 636	1 053	10 829	229	np	np	np	np	15 245
September Quarter	1 744	1 085	10 655	227	np	np	np	np	15 190
December Quarter	1 774	1 141	10 684	228	np	np	np	np	15 457
<b>2010</b>									
March Quarter	1 785	1 073	10 435	358	np	np	np	np	15 289

BED SPACES (no.)

<b>2009</b>									
March Quarter	7 176	5 119	42 185	993	np	np	np	np	62 748
June Quarter	7 181	4 894	41 995	976	np	np	np	np	62 310
September Quarter	7 512	4 802	41 496	962	np	np	np	np	61 925
December Quarter	7 562	5 075	41 522	950	np	np	np	np	62 692
<b>2010</b>									
March Quarter	7 660	4 722	40 581	1 436	np	np	np	np	62 309

np not available for publication but included in totals where applicable, unless otherwise indicated

(a) The number of owners, managers or real estate agents with 15 or more self-contained units.

	New South Wales	Victoria	Queensland	South Australia	Western Australia	Tasmania	Northern Territory	Australian Capital Territory	Australia
PERSONS EMPLOYED (no.)									
<b>2009</b>									
March Quarter	538	237	1 398	44	np	np	np	np	2 665
June Quarter	558	250	1 334	42	np	np	np	np	2 625
September Quarter	566	258	1 315	67	np	np	np	np	2 644
December Quarter	578	251	1 296	77	np	np	np	np	2 663
<b>2010</b>									
March Quarter	561	238	1 280	83	np	np	np	np	2 638
UNIT NIGHTS OCCUPIED ('000)									
<b>2009</b>									
March Quarter	92.7	47.7	586.8	15.4	np	np	np	np	846.8
June Quarter	68.6	46.0	515.7	15.1	np	np	np	np	736.4
September Quarter	79.7	47.1	646.6	15.5	np	np	np	np	871.2
December Quarter	95.7	49.3	616.3	15.1	np	np	np	np	880.0
<b>2010</b>									
March Quarter	99.9	50.3	540.2	23.2	np	np	np	np	821.7
UNIT OCCUPANCY RATE (%)									
<b>2009</b>									
March Quarter	62.3	53.7	60.3	73.5	np	np	np	np	62.0
June Quarter	46.5	50.9	52.5	72.3	np	np	np	np	53.4
September Quarter	50.4	47.2	66.0	74.3	np	np	np	np	62.4
December Quarter	58.6	50.2	62.8	72.1	np	np	np	np	62.3
<b>2010</b>									
March Quarter	62.2	55.5	57.5	72.1	np	np	np	np	60.0
UNIT LETTINGS ('000)									
<b>2009</b>									
March Quarter	36.9	10.5	230.7	4.4	np	np	np	np	320.7
June Quarter	27.5	9.6	200.1	5.2	np	np	np	np	279.5
September Quarter	35.3	10.7	236.6	5.1	np	np	np	np	321.9
December Quarter	35.9	11.2	253.0	5.2	np	np	np	np	346.6
<b>2010</b>									
March Quarter	37.2	11.7	209.2	5.6	np	np	np	np	303.8
AVERAGE LENGTH OF STAY (days)									
<b>2009</b>									
March Quarter	2.5	4.5	2.5	3.5	np	np	np	np	2.6
June Quarter	2.5	4.8	2.6	2.9	np	np	np	np	2.6
September Quarter	2.3	4.4	2.7	3.1	np	np	np	np	2.7
December Quarter	2.7	4.4	2.4	2.9	np	np	np	np	2.5
<b>2010</b>									
March Quarter	2.7	4.3	2.6	4.2	np	np	np	np	2.7
TAKINGS FROM ACCOMMODATION (\$'000)									
<b>2009</b>									
March Quarter	14 939	7 352	80 788	1 892	np	np	np	np	119 791
June Quarter	9 320	5 636	63 701	1 519	np	np	np	np	92 258
September Quarter	13 143	7 995	84 524	1 552	np	np	np	np	118 212
December Quarter	15 474	7 647	91 270	1 787	np	np	np	np	130 974
<b>2010</b>									
March Quarter	16 382	8 180	77 108	3 165	np	np	np	np	121 090

np not available for publication but included in totals where applicable, unless otherwise indicated

	New South Wales	Victoria	Queensland	South Australia	Western Australia	Tasmania	Northern Territory	Australian Capital Territory	Australia
--	-----------------------	----------	------------	--------------------	----------------------	----------	-----------------------	------------------------------------	-----------

LETTING ENTITIES (a) (no.)

<b>2009</b>									
March Quarter	157	33	347	16	22	8	3	3	589
June Quarter	156	33	345	16	22	9	3	3	587
September Quarter	156	33	338	16	22	8	3	3	579
December Quarter	157	34	336	16	22	9	4	3	581
<b>2010</b>									
March Quarter	155	34	333	18	24	8	3	3	578

SINGLE BEDROOM HOLIDAY FLATS, UNITS AND HOUSES (no.)

<b>2009</b>									
March Quarter	839	409	3 236	103	371	42	np	np	5 102
June Quarter	778	316	3 140	101	372	50	np	np	4 863
September Quarter	813	351	3 050	103	376	42	np	np	4 842
December Quarter	848	368	3 047	109	379	np	99	np	4 969
<b>2010</b>									
March Quarter	797	391	3 006	173	398	48	np	np	4 909

MULTIPLE BEDROOM HOLIDAY FLATS, UNITS AND HOUSES (no.)

<b>2009</b>									
March Quarter	8 814	2 770	10 597	829	856	187	np	np	24 222
June Quarter	8 531	2 905	10 693	832	846	194	np	np	24 169
September Quarter	8 450	2 915	10 613	824	837	187	np	np	23 993
December Quarter	8 553	2 944	10 668	831	834	np	116	np	24 264
<b>2010</b>									
March Quarter	8 386	3 020	10 538	861	865	218	np	np	24 110

TOTAL HOLIDAY FLATS, UNITS AND HOUSES (no.)

<b>2009</b>									
March Quarter	9 653	3 179	13 833	932	1 227	229	np	np	29 324
June Quarter	9 309	3 221	13 833	933	1 218	244	np	np	29 032
September Quarter	9 263	3 266	13 663	927	1 213	229	np	np	28 835
December Quarter	9 401	3 312	13 715	940	1 213	np	215	np	29 233
<b>2010</b>									
March Quarter	9 183	3 411	13 544	1 034	1 263	266	np	np	29 019

BED SPACES (no.)

<b>2009</b>									
March Quarter	51 438	17 863	56 746	6 037	6 444	1 073	np	np	140 707
June Quarter	50 403	17 953	56 612	5 921	6 411	1 128	np	np	139 513
September Quarter	50 415	17 978	56 130	5 939	6 323	1 077	np	np	138 960
December Quarter	50 666	17 150	56 437	6 009	6 260	np	744	np	139 162
<b>2010</b>									
March Quarter	49 922	17 738	55 640	6 294	6 402	1 212	np	np	138 577

np not available for publication but included in totals where applicable, unless otherwise indicated

(a) The number of owners, managers or real estate agents with 15 or more self-contained units.

	New South Wales	Victoria	Queensland	South Australia	Western Australia	Tasmania	Northern Territory	Australian Capital Territory	Australia
UNIT NIGHTS OCCUPIED ('000)									
<b>2009</b>									
March Quarter	355.5	74.6	724.3	36.1	83.7	14.8	np	np	1 305.3
June Quarter	226.0	55.4	620.2	24.1	72.1	7.7	np	np	1 023.4
September Quarter	243.3	57.8	782.4	23.3	64.0	5.2	np	np	1 195.5
December Quarter	326.6	65.3	763.6	27.6	81.2	np	7.9	np	1 293.6
<b>2010</b>									
March Quarter	363.3	72.6	670.0	41.9	83.3	15.5	np	np	1 264.4
UNIT OCCUPANCY RATE (%)									
<b>2009</b>									
March Quarter	40.9	26.8	58.2	43.1	75.8	72.0	np	np	49.6
June Quarter	26.7	19.3	49.4	28.4	65.0	34.8	np	np	38.9
September Quarter	28.6	19.2	62.2	27.3	57.3	24.7	np	np	45.1
December Quarter	38.2	21.9	60.6	32.0	72.8	np	40.1	np	48.4
<b>2010</b>									
March Quarter	44.4	24.1	55.0	45.1	73.3	64.9	np	np	48.7
UNIT LETTINGS ('000)									
<b>2009</b>									
March Quarter	72.8	15.6	259.9	13.5	28.6	7.8	np	np	401.8
June Quarter	48.2	11.9	225.3	10.0	28.9	3.7	np	np	333.7
September Quarter	60.5	13.5	261.7	8.9	28.3	2.0	np	np	380.1
December Quarter	70.9	16.4	290.4	11.2	30.3	np	3.2	np	431.7
<b>2010</b>									
March Quarter	72.5	16.1	239.6	14.3	28.8	7.6	np	np	384.2
AVERAGE LENGTH OF STAY (days)									
<b>2009</b>									
March Quarter	4.9	4.8	2.8	2.7	2.9	1.9	np	np	3.2
June Quarter	4.7	4.7	2.8	2.4	2.5	2.1	np	np	3.1
September Quarter	4.0	4.3	3.0	2.6	2.3	2.6	np	np	3.1
December Quarter	4.6	4.0	2.6	2.5	2.7	np	2.5	np	3.0
<b>2010</b>									
March Quarter	5.0	4.5	2.8	2.9	2.9	2.0	np	np	3.3
TAKINGS FROM ACCOMMODATION (\$'000)									
<b>2009</b>									
March Quarter	46 704	12 407	95 283	4 527	11 542	2 051	np	np	174 854
June Quarter	23 274	7 222	74 267	2 422	8 906	913	np	np	119 845
September Quarter	29 872	9 979	100 462	2 225	7 553	622	np	np	154 148
December Quarter	43 670	10 283	110 139	3 200	11 150	np	1 247	np	182 836
<b>2010</b>									
March Quarter	50 114	11 424	90 964	5 505	11 849	2 075	np	np	175 166

np not available for publication but included in totals where applicable, unless otherwise indicated

Period	New South Wales	Victoria	Queensland	South Australia	Western Australia	Tasmania	Northern Territory	Australian Capital Territory	Australia
ESTABLISHMENTS (no.)									
<b>2009</b>									
March Quarter	97	63	115	26	62	20	20	3	406
June Quarter	98	61	113	27	61	20	21	3	404
September Quarter	98	62	111	27	59	19	21	3	400
December Quarter	99	61	112	27	59	18	21	3	400
<b>2010</b>									
March Quarter	94	60	107	27	59	18	21	3	389
BED SPACES (no.)									
<b>2009</b>									
March Quarter	11 473	8 625	13 376	2 363	4 894	np	2 852	np	45 847
June Quarter	11 519	8 536	13 279	2 471	4 815	np	2 902	np	45 728
September Quarter	11 916	8 615	13 656	2 470	4 690	np	2 937	np	46 398
December Quarter	12 339	8 346	13 831	2 442	4 606	np	2 940	np	46 508
<b>2010</b>									
March Quarter	12 282	8 295	13 424	2 485	4 587	np	2 825	np	46 012
PERSONS EMPLOYED (no.)									
<b>2009</b>									
March Quarter	737	494	1 134	119	336	np	337	np	3 396
June Quarter	718	488	1 209	116	314	np	283	np	3 322
September Quarter	731	529	1 200	118	274	np	293	np	3 341
December Quarter	767	527	1 186	126	277	np	276	np	3 360
<b>2010</b>									
March Quarter	747	529	1 171	127	277	np	249	np	3 307
GUEST NIGHTS OCCUPIED (no.)									
<b>2009</b>									
March Quarter	701 611	452 833	657 520	112 463	291 336	np	102 031	np	2 426 755
June Quarter	509 868	315 060	702 006	82 190	232 896	np	166 586	np	2 075 288
September Quarter	530 044	289 071	709 407	88 616	198 779	np	162 500	np	2 036 350
December Quarter	717 055	368 053	684 879	99 560	224 770	np	113 814	np	2 278 877
<b>2010</b>									
March Quarter	753 911	439 299	612 214	109 389	222 374	np	87 334	np	2 330 683
BED OCCUPANCY RATE (%)									
<b>2009</b>									
March Quarter	68.0	59.6	54.9	52.9	66.6	np	39.8	np	59.2
June Quarter	48.8	40.7	58.6	37.1	53.2	np	63.1	np	50.1
September Quarter	48.5	36.5	57.0	39.3	46.4	np	60.1	np	47.9
December Quarter	63.4	48.9	53.8	44.3	53.0	np	42.1	np	53.5
<b>2010</b>									
March Quarter	69.1	60.1	50.9	48.9	53.9	np	35.9	np	56.9
GUEST ARRIVALS (no.)									
<b>2009</b>									
March Quarter	205 856	123 041	261 564	41 385	70 260	np	40 860	np	796 892
June Quarter	167 070	88 308	269 496	30 048	66 216	np	64 202	np	716 569
September Quarter	157 860	81 368	297 155	29 500	57 908	np	64 511	np	716 024
December Quarter	200 863	122 806	290 312	35 725	58 523	np	39 767	np	783 619
<b>2010</b>									
March Quarter	225 709	139 042	262 925	40 652	54 005	np	33 877	np	807 305

np not available for publication but included in totals where applicable, unless otherwise indicated

(a) Comprising establishments with 25 or more bed spaces.

<i>Period</i>	<i>New South Wales</i>	<i>Victoria</i>	<i>Queensland</i>	<i>South Australia</i>	<i>Western Australia</i>	<i>Tasmania</i>	<i>Northern Territory</i>	<i>Australian Capital Territory</i>	<i>Australia</i>
---------------	--------------------------------	-----------------	-------------------	----------------------------	------------------------------	-----------------	-------------------------------	---	------------------

AVERAGE LENGTH OF STAY (*days*)

<b>2009</b>									
March Quarter	3.4	3.7	2.5	2.7	4.1	np	2.5	np	3.0
June Quarter	3.1	3.6	2.6	2.7	3.5	np	2.6	np	2.9
September Quarter	3.4	3.6	2.4	3.0	3.4	np	2.5	np	2.8
December Quarter	3.6	3.0	2.4	2.8	3.8	np	2.9	np	2.9
<b>2010</b>									
March Quarter	3.3	3.2	2.3	2.7	4.1	np	2.6	np	2.9

## TAKINGS FROM ACCOMMODATION (\$'000)

<b>2009</b>									
March Quarter	21 259	12 778	16 743	2 595	7 776	np	2 334	np	66 519
June Quarter	14 708	9 178	17 625	2 042	6 255	np	4 636	np	56 439
September Quarter	14 848	8 123	17 414	2 091	5 414	np	4 839	np	54 443
December Quarter	21 855	10 300	17 112	2 432	6 055	np	3 012	np	62 921
<b>2010</b>									
March Quarter	22 988	12 870	15 299	2 754	5 982	np	2 269	np	65 155

np not available for publication but included in totals where applicable,  
unless otherwise indicated

(a) Comprising establishments with 25 or more bed spaces.



## EXPLANATORY NOTES

### INTRODUCTION

**1** This publication presents data from the quarterly Survey of Tourist Accommodation (STA). The STA is a mailout collection that completely enumerates all in-scope accommodation establishments within Australia.

### SCOPE

**2** From March quarter 2005, the scope of the STA comprises the following categories of establishments:

- licensed hotels and resorts with facilities and 5 or more rooms
- motels, private hotels and guest houses with facilities and 5 or more rooms
- serviced apartments with 5 or more units
- caravan parks with 40 or more powered sites
- holiday flats, units and houses of letting entities with 15 or more rooms or units
- visitor hostels with 25 or more bed spaces.

**3** With the exception of caravan parks, these establishments provide predominantly short-term non-residential accommodation, i.e. accommodation which is not leased, and which is provided to guests who would generally stay for periods of less than two months. Some of these establishments also provide long-term residential accommodation. The amount of such activity is considered to be insignificant and is included in the data presented in this publication.

**4** Caravan parks provide either short-term or long-term accommodation. If a caravan park has the majority of sites occupied by paying guests who have stayed continuously for two months or more during the survey period, the caravan park is classified as long-term. Data for caravan parks are presented by short-term and long-term in this publication.

**5** Previous to March quarter 2005, the scope of the STA comprised:

- licensed hotels and resorts with facilities and 15 or more rooms
- motels, private hotels and guest houses with facilities and 15 or more rooms
- serviced apartments with 15 or more units.

**6** For the four quarters of 2000 and 2003, the scope of the STA was expanded to include:

- caravan parks with 40 or more powered sites
- holiday flats, units and houses of letting entities with 15 or more rooms or units
- visitor hostels with 25 or more bed spaces.

### COVERAGE

**7** The main source of coverage is from the Australian Automobile Association through AAA Tourism Pty Ltd. This is supplemented by notification of new tourism developments and their likely opening dates in selected guides, major tourism journals and periodicals and newspapers. Periodic comparison with lists of accommodation establishments provided by the various tourism organisations and industry associations is also undertaken.

### TAKINGS FROM ACCOMMODATION

**8** From 1 July 2000, takings from accommodation include gross revenue from the provision of accommodation, including GST. Takings from meals are excluded. Where businesses are unable to provide the data inclusive of GST, it is automatically adjusted by the ABS prior to aggregation and release in output.

### STAR GRADING

**9** Star grade classifications of establishments are continuously revised by AAA Tourism Pty Ltd. This should be taken into account when making comparisons over time. Any queries regarding the star grading process should be directed to AAA Tourism Pty Ltd on (03) 8601 2200 or email <enquiries@aaatourism.com.au>.

**10** Data by star grade for states and territories are included in the data cubes that accompany this publication: Tourist Accommodation, Small Area Data (cat. no. 8635.0.55.002 for national data and cat. no. 8635.1.55.001 – 8635.8.55.001 for state/territory data).

## EXPLANATORY NOTES *continued*

### STATISTICAL GEOGRAPHY

**11** Small area statistics for 2009 are classified to the Australian Standard Geographical Classification (ASGC), 2008 Edition (cat. no. 1216.0). Data are coded to the statistical local area (SLA) level. The definitions of the geographical abbreviations can be found under the Explanatory Notes of this publication.

**12** These SLA data are aggregated to tourism regions as defined by relevant state and territory tourism organisations. Tourism regions are reviewed annually and are subject to boundary and name changes. Where changes have occurred care should be taken when making comparisons with previously published data at this level.

**13** Data by tourism regions are no longer presented in this publication. Small area data are provided in the data cubes that accompany this publication: Tourist Accommodation, Small Area Data (cat. no. 8635.0.55.002 for national data and cat. no. 8635.1.55.001 – 8635.8.55.001 for state/territory data).

**14** Details of SLAs, the composition of tourism regions and maps of tourism regions are provided in the ABS publication Tourism Region Maps and Concordance Files, Australia (cat. no. 9503.0.55.001) available from the ABS web site <[www.abs.gov.au](http://www.abs.gov.au)>.

### DATA QUALITY

**15** The survey does not have a sample component and the data are not subject to sampling variability. However, other inaccuracies collectively referred to as non-sampling error may affect the data. These non-sampling errors may arise from a number of sources, including:

- errors in the reporting of data by providers
- errors in the process of capturing data
- imputation for missing data
- definition and classification errors
- incomplete coverage.

**16** Every effort has been made to reduce non-sampling error to a minimum by careful design and testing of questionnaires, and efficient operating procedures and systems used to compile statistics.

## EXPLANATORY NOTES *continued*

### *Response rates*

**17** The response rates for Australia for the most recent quarters are shown below:

#### RESPONSE RATES

	<i>Mar</i> <i>Qtr</i> 2009	<i>Jun</i> <i>Qtr</i> 2009	<i>Sep</i> <i>Qtr</i> 2009	<i>Dec</i> <i>Qtr</i> 2009	<i>Mar</i> <i>Qtr</i> 2010
<i>Activity</i>	%	%	%	%	%
Licensed hotels with facilities					
with 5 to 14 rooms	82.1	79.2	83.2	85.0	90.2
with 15 or more rooms	90.3	93.9	91.6	92.8	91.4
with 5 or more rooms	87.5	89.0	88.8	90.2	91.0
Motels and guest houses					
with 5 to 14 rooms	89.0	89.1	91.3	90.9	90.4
with 15 or more rooms	90.1	92.6	91.3	92.8	93.1
with 5 or more rooms	89.7	91.5	91.3	91.5	92.3
Serviced apartments					
with 5 to 14 rooms	89.0	89.7	91.4	91.9	93.5
with 15 or more rooms	93.8	94.4	93.1	92.8	94.2
with 5 or more rooms	93.3	93.2	92.7	93.7	94.1
Hotels, motels and serviced apartments					
with 5 to 14 rooms	87.9	86.9	89.4	89.7	90.9
with 15 or more rooms	90.9	93.3	91.8	92.6	93.0
with 5 or more rooms	90.0	91.4	91.1	91.7	92.4
Caravan parks	92.2	91.8	90.8	92.5	93.5
Holiday flats, units and houses	91.4	94.1	91.8	91.5	92.5
Visitor hostels	92.1	92.1	91.0	92.5	95.1

### *Imputation rates*

**18** Missing data items are replaced by imputed values based on reported data. Average quarterly movements are applied to previously reported data for each non-responding unit to estimate values for missing data items. Only if previously reported data are not available, then data from a similar unit is used as a 'donor' for the missing data items.

## EXPLANATORY NOTES *continued*

*Imputation rates continued*

**19** The imputation rates for Australia for the most recent quarters are shown below:

### IMPUTATION RATES, NIGHTS OCCUPIED (a)

	Mar Qtr 2009	Jun Qtr 2009	Sep Qtr 2009	Dec Qtr 2009	Mar Qtr 2010
<i>Activity</i>	%	%	%	%	%
<b>Licensed hotels with facilities</b>					
with 5 to 14 rooms	14.3	20.4	17.1	14.2	8.6
with 15 or more rooms	2.2	1.7	4.0	3.1	6.8
with 5 or more rooms	2.6	2.2	4.3	3.4	6.8
<b>Motels and guest houses</b>					
with 5 to 14 rooms	7.8	10.1	8.4	8.8	9.3
with 15 or more rooms	7.6	6.4	7.4	7.3	5.1
with 5 or more rooms	7.7	6.7	7.5	7.5	5.5
<b>Serviced apartments</b>					
with 5 to 14 rooms	5.5	8.0	7.1	7.1	5.3
with 15 or more rooms	4.0	4.2	6.0	4.9	5.1
with 5 or more rooms	4.0	4.4	6.0	5.0	5.1
<b>Hotels, motels and serviced apartments</b>					
with 5 to 14 rooms	8.6	11.7	9.8	9.5	8.4
with 15 or more rooms	4.5	4.0	5.7	5.0	5.8
with 5 or more rooms	4.8	4.4	5.9	5.2	5.9
Caravan parks	5.7	6.8	7.4	5.6	5.3
Holiday flats, units and houses	6.2	4.5	7.1	5.6	8.0
Visitor hostels	5.4	4.8	4.8	6.5	3.3

(a) Based on room nights for hotels, motels and serviced apartments; site nights for caravan parks; unit nights for holiday flats, units and houses; and guest nights for visitor hostels

### IMPUTATION RATES, TAKINGS FROM ACCOMMODATION

	Mar Qtr 2009	Jun Qtr 2009	Sep Qtr 2009	Dec Qtr 2009	Mar Qtr 2010
<i>Activity</i>	%	%	%	%	%
<b>Licensed hotels with facilities</b>					
with 5 to 14 rooms	13.9	17.7	15.9	14.5	8.5
with 15 or more rooms	1.6	1.4	3.4	2.5	6.8
with 5 or more rooms	1.7	1.6	3.5	2.6	6.8
<b>Motels and guest houses</b>					
with 5 to 14 rooms	7.9	10.7	8.5	8.6	8.6
with 15 or more rooms	7.1	6.2	7.0	7.0	4.9
with 5 or more rooms	7.1	6.5	7.1	7.1	5.2
<b>Serviced apartments</b>					
with 5 to 14 rooms	5.4	9.7	8.4	7.4	5.9
with 15 or more rooms	3.7	4.1	5.9	4.9	5.2
with 5 or more rooms	3.7	4.3	6.0	5.0	5.2
<b>Hotels, motels and serviced apartments</b>					
with 5 to 14 rooms	8.1	11.5	9.6	9.2	7.9
with 15 or more rooms	3.6	3.4	5.0	4.3	5.9
with 5 or more rooms	3.7	3.7	5.2	4.5	5.9
Caravan parks	5.4	5.4	6.0	5.0	4.4
Holiday flats, units and houses	5.3	4.4	7.5	5.4	7.7
Visitor hostels	4.5	4.2	4.9	6.0	3.2

## EXPLANATORY NOTES *continued*

### SEASONAL ADJUSTMENT

**20** Seasonal adjustment is a means of removing the estimated effects of normal seasonal variation from the original time series so that the effect of other influences on the series may be more clearly recognised. Seasonal adjustment procedures do not aim to remove the irregular or non-seasonal influences which may be present in any particular quarter. Irregular influences that are highly volatile can make it difficult to interpret the movement of the series even after adjustment for seasonal variation, and cannot be assumed to indicate changes in the trend.

**21** The seasonally adjusted estimates in this publication have been produced using a concurrent methodology whereby the seasonal factors are revised each quarter to take into account the seasonality exhibited by the latest observation. A more detailed review is conducted annually.

**22** From the March quarter 2008, the Survey of Tourist Accommodation collection implemented Autoregressive Integrated Moving Average (ARIMA) modelling techniques for the majority of applicable time series. The revision properties of the seasonally adjusted and trend estimates can be improved by the use of ARIMA modelling. ARIMA modelling relies on the characteristics of the series being analysed to project future period data. The projected values are temporary, intermediate values, that are only used internally to improve the estimation of the seasonal factors. The projected data do not affect the original estimates and are discarded at the end of the seasonal adjustment process.

**23** For more information on the details of ARIMA modelling see the feature article 'Use of ARIMA modelling to reduce revisions' in the October 2004 issue of Australian Economic Indicators (cat. no. 1350.0). Any queries regarding the ARIMA modelling should be directed to Time Series Analysis on (02) 6252 6345 or email <time.series.analysis@abs.gov.au>.

### TREND ESTIMATES

**24** Smoothing the seasonally adjusted series reduces the impact of the irregular component of the seasonally adjusted series and creates the trend estimates. The trend estimates are derived by applying a 7-term Henderson moving average to the quarterly seasonally adjusted series. The Henderson moving average used in the middle of the time series is symmetric but, as the end of a time series is approached, asymmetric forms of the symmetric moving average are applied. Unlike the weights of the symmetric 7-term Henderson moving average, the asymmetric weights have been tailored to suit the the particular characteristics of individual series.

**25** While these techniques enable trend estimates for the latest period to be produced, the process does result in revisions to the trend estimates in recent quarters, particularly as additional original estimates become available. For further information refer to Information Paper: A Guide to Interpreting Time Series - Monitoring Trends, 2003 (cat. no. 1349.0) available at the ABS web site <www.abs.gov.au>.

### CONFIDENTIALISATION OF DATA

**26** Under the Census and Statistics Act, when releasing statistics the ABS is required to do this in a manner that is "not likely" (in a legal sense) to enable the identification of a particular person or organisation. A number of techniques are used to do this, including suppression of information. To ensure provider confidentiality in the Survey of Tourist Accommodation, the ABS uses a computerised process known as Disclosure Avoidance Analysis System (DAAS) to confidentialise the entire tourist accommodation dataset each quarter. This process not only ensures that data are suppressed to ensure individual establishments cannot be identified, but also suppresses data in other (consequential) cells to ensure data cannot be derived through deduction from the information available.

## EXPLANATORY NOTES *continued*

### CONFIDENTIALISATION OF DATA *continued*

**27** While the scope and coverage of the Survey of Tourist Accommodation has been expanded, priority has been given to maintaining the integrity and continuity of the core collection (hotels, motels and guest houses, and serviced apartments with 15 or more rooms). In order to maximise data released from the core collection series and the new components of the expanded scope collection (hotels, motels and guest houses, and serviced apartments with 5-14 rooms), the 'total' series (5 or more rooms) has been used for any consequential confidentiality required where possible.

**28** The DAAS process begins by confidentialising at the Statistical Local Area (SLA) level, then across Tourism regions, then at the state level and finally the national level. If there is an SLA that has been made confidential then another SLA will have to be made confidential within that Tourism region to protect the confidentiality of the providers in the SLA that was originally made confidential. Depending on the number of SLAs in the Tourism region the whole Tourism region may need to be made confidential. As a consequence of this, at least one more Tourism region within a state or territory will also be confidentialised. This may also occur at the state/territory level.

### USER AGGREGATION OF DATA

**29** The aggregation of data by users across time periods should be undertaken with caution, due to the possibility of non-inclusion of confidentialised data (see the above section for more information about confidentialisation). Where one or more cells contributing to a total have been confidentialised (ie, contains the value of n.p.), the resulting aggregated total will be incorrect. However, some broader levels of data may not be affected by confidentialised cells.

**30** Where data can be aggregated (ie, no confidentialised cells are included) for calendar and financial year/s purposes, the data items Establishments, Rooms, Persons employed and Bed spaces should not be aggregated. For these items it is recommended that for calendar years, the value of the December quarter is used, and for financial years, the value of the June quarter is used.

**31** Any data items that have been derived from other items collected in the survey cannot be aggregated (ie, all those with labels ending in 'rate' or commencing with 'average'). These items must be re-derived based on the aggregation of each of the quarterly items collected in the survey used in the derivation of the rate or average (see Glossary for formulas).

**32** Users are cautioned against deriving any non-standard aggregations (eg, aggregation of selected star gradings such as 4-star and 5-star; aggregation of selected geographical areas such as capital city areas and balance of state; aggregation of selected activities such as hotels and motels combined). This is because data are confidentialised based on the standard data item structure.

### EFFECTS OF ROUNDING

**33** Where figures have been rounded, discrepancies may occur between totals and the sum of the component items.

**34** Estimates of movement shown in this publication are obtained by taking the difference of unrounded estimates. The movement is then rounded to one decimal place. Therefore where a discrepancy occurs between the reported movement and the difference of the rounded estimates, the reported movement will be more accurate.

### RELATED PUBLICATIONS

**35** Other ABS publications and products which may be of interest are outlined below.

## EXPLANATORY NOTES *continued*

### RELATED PUBLICATIONS

*continued*

All publications released from 1998 onwards are available on the ABS web site [www.abs.gov.au](http://www.abs.gov.au).

Tourist Accommodation, Small Area Data (cat. no. 8635.0.55.002) (data cube for Australia – issued quarterly)

Tourist Accommodation, Small Area Data (cat. no. 8635.1.55.001–8635.8.55.001) (data cubes for each state/territory – issued quarterly)

Tourism Region Maps and Concordance Files, Australia (cat. no. 9503.0.55.001) (annual)

Tourist Accommodation, Australia, Expanded Scope Collection (cat. no. 8635.0.55.001) (irregular)

Short-term Visitor Arrivals Estimates, Australia (cat. no. 3401.0.55.001) (issued monthly)

Overseas Arrivals and Departures, Australia (cat. no. 3401.0) (issued monthly)

Australian National Accounts, Tourism Satellite Account (cat. no. 5249.0) (annual)

**36** The catalogue of current publications and other products is available from the ABS web site [www.abs.gov.au](http://www.abs.gov.au). The ABS also issues release advices on the web site which detail products to be released both in the coming week and the next six months.

### ABS DATA AVAILABLE ON REQUEST

**37** As well as the statistics included in this publication, the ABS has other relevant data available on request. Inquiries should be made to the National Information and Referral Service on 1300 135 070.

## GLOSSARY

<b>Average length of stay</b>	<p>Average number of days each guest stayed during the reference period. It is a derived item calculated by dividing the number of guest nights occupied by the number of guest arrivals with the result expressed as a number of days,</p> $\text{Average length of stay(days)} = \frac{\text{Guest nights occupied}}{\text{Guest arrivals}}$
<b>Average takings per available room night</b>	<p>The takings from accommodation divided by the total number of room nights available for the survey period,</p> $\text{Average takings per available room night(\$)} = \frac{\text{Takings from accommodation}}{\text{Room nights available}}$
<b>Average takings per room night occupied</b>	<p>The takings from accommodation divided by the total number of room nights occupied for the survey period,</p> $\text{Average takings per room night occupied(\$)} = \frac{\text{Takings from accommodation}}{\text{Room nights occupied}}$
<b>Bed occupancy rate</b>	<p>The bed occupancy rate represents bed occupancy expressed as a percentage of total capacity available during the survey period,</p> $\text{Bed occupancy rate (\%)} = \frac{\text{Guest nights occupied}}{\text{Guest nights available}} * 100$
<b>Bed spaces</b>	<p>The maximum number of bed spaces normally in place available to accommodate paying guests during the survey period. Three-quarter beds are counted as one bed space; double beds as two bed spaces. Cots and divans not normally used as beds are excluded.</p>
<b>Cabins, flats, units and villas</b>	<p>The maximum number of cabins, flats, units and villas available at caravan parks for accommodating paying guests during the survey period.</p>
<b>Capacity</b>	<p>Capacity in terms of rooms/units/apartments/suites, visitor hostel bed spaces, holiday flats/units/houses or caravan park sites is the maximum number available to accommodate paying guests on the last day of the survey period. Capacity closed temporarily for seasonal reasons is included.</p>
<b>Caravan park sites</b>	<p>The measure of total caravan park capacity available for accommodating paying guests during the survey period. Includes on-site vans, other powered sites, unpowered sites and cabins, flats, units and villas.</p>
<b>Caravan parks</b>	<p>Establishments with 40 or more powered sites and cabins, flats, units and villas which provide either short-term or long-term accommodation to the general public and which provide powered sites for caravans and toilet, shower and laundry facilities for guests.</p>
<b>Caravan parks, long-term</b>	<p>Caravan parks where the majority of paying guests occupied sites for periods of two months or more.</p>
<b>Caravan parks, short-term</b>	<p>Caravan parks where the majority of paying guests occupied sites for periods of less than two months.</p>
<b>Establishments</b>	<p>The number of licensed hotels and resorts, motels and guest houses, serviced apartments, caravan parks and visitor hostels within the scope of the survey which operated for any part of the survey period, or which closed temporarily for the quarter for seasonal reasons.</p>
<b>Guest arrivals</b>	<p>The total number of paying guests counted only on the first night they stayed at the accommodation establishment during the survey period.</p> <p>For holiday flats, units and houses this is the same as unit lettings.</p> <p>This data item is not collected for caravan parks.</p>
<b>Guest nights available</b>	<p>The total number of nights available to all paying guests during the survey period.</p> <p>This is derived from the number of bed spaces multiplied by the number of days for which they were available during the survey period. For establishments closing (other than for seasonal reasons) or opening during this period, operating periods only are included.</p>



## GLOSSARY *continued*

<b>Guest nights occupied</b>	The total number of paying guests counted on each night they stayed at the accommodation establishment during the survey period.
<b>Holiday flats, units and houses</b>	The total number of holiday flats, units and houses (excluding establishments predominantly operated on a time-share basis) operated by letting entities (i.e. owners, managers or real estate agents) who have sole letting rights to at least 15 flats, units or houses for short-term letting. These flats, units or houses should be mainly self-contained in terms of cooking, bath (or shower) and toilet facilities and should not have breakfast available for guests. Data for holiday flats, units or houses include short-term owner operators as well as paying guest accommodation.
<b>Hotels</b>	See licensed hotels and resorts with facilities.
<b>Letting entities</b>	For holiday flats, units and houses, the number of owners, managers or real estate agents within the scope of the survey who operated for any part of the survey period.
<b>Licensed hotels and resorts with facilities</b>	Establishments with five or more rooms which are licensed to operate a public bar and which provide accommodation on a room/suite basis, with a bath/shower and toilet in most guest rooms, but which do not have full cooking facilities (i.e. hot plates and oven/microwave) in most guest rooms.
<b>Motels, private hotels and guest houses with facilities</b>	Establishments with five or more rooms which are not licensed to operate a public bar, and which provide accommodation on a room/suite basis, with a bath/shower and toilet in most guest rooms, but which do not have full cooking facilities (i.e. hot plates and oven/microwave) in most guest rooms.
<b>Multiple bedroom holiday flats, units and houses</b>	The total number of holiday flats, units and houses available with multiple bedrooms.
<b>Occupancy</b>	<p>Occupancy in terms of room nights, unit nights or site nights occupied refers to the total number of nights each room, unit or caravan park was occupied during the survey period.</p> <p>Occupancy in terms of guest nights refers to the total number of paying guests counted on each night they stayed at the accommodation establishment during the survey period.</p>
<b>On-site vans</b>	The maximum number of vans owned or leased by the establishment for the purpose of providing accommodation to the general public.
<b>Other powered sites</b>	The maximum number of sites with provision for connection to electric power supply, available at caravan parks for accommodating paying guests during the survey period, excluding powered sites occupied by on-site vans, and cabins, flats, units and villas.
<b>Other sites permanently reserved</b>	The total number of powered and unpowered sites, on-site vans and cabins, flats, units and villas continuously let for two months or more on the last day of the survey period to tenants who occupy the sites only on a casual or sporadic basis.
<b>Persons employed</b>	The total number of persons working at each accommodation establishment at the end of the survey period (including working proprietors and those working on other than accommodation activities). This data item is not applicable to holiday flats, units and houses let by real estate agents.
<b>Room nights available</b>	The number of rooms/units available multiplied by the number of days for which they were available during the survey period. For establishments closing (other than for seasonal reasons) or opening during this period, operating periods only are included.
<b>Room nights occupied</b>	The number of nights each guest room/unit was occupied by a paying guest during the survey period.
<b>Room occupancy rate</b>	<p>The room occupancy rate represents room occupancy expressed as a percentage of total capacity available during the survey period,</p> $\text{Room occupancy rate (\%)} = \frac{\text{Room nights occupied}}{\text{Room nights available}} * 100$

## GLOSSARY *continued*

<b>Room occupancy rate</b> <i>continued</i>	providing that, for establishments closing (other than for seasonal reasons) or opening during the survey period, the denominator of the above expression includes only operating periods.
<b>Rooms</b>	The maximum number of rooms available for accommodating short-term paying guests at each licensed hotel and resort, motel and guest house and serviced apartment during the survey period. Units, apartments and suites are treated as rooms for these types of establishments in these survey results.
<b>Serviced apartments</b>	Establishments with five or more units which mostly comprise self-contained units at the same location, and which are available on a unit/apartment basis to the general public for a minimum of one night. The units should have full cooking facilities (i.e. hot plates and oven/microwave), refrigerator and bath/shower and toilet facilities; all bed linen and towels should be provided, and daily servicing (i.e. cleaning and bed making) must be available through the on-site management, although this service may not necessarily be used.
<b>Single bedroom holiday flats, units and houses</b>	The total number of holiday flats, units and houses available with a single bedroom.
<b>Site nights available</b>	The number of caravan park sites available multiplied by the number of days for which they were available during the survey period. For establishments closing (other than for seasonal reasons) or opening during this period, operating periods only are included.
<b>Site nights occupied</b>	The total number of nights each caravan park site was occupied during the survey period.
<b>Site occupancy rate</b>	<p>The site occupancy rate for caravan parks represents site occupancy expressed as a percentage of total capacity available during the survey period,</p> $\text{Site occupancy rate (\%)} = \frac{\text{Site nights occupied}}{\text{Site nights available}} * 100$ <p>providing that, for establishments closing (other than for seasonal reasons) or opening during the survey period, the denominator of the above expression includes only operating periods.</p>
<b>Sites occupied by long-term guests</b>	The total number of caravan park sites occupied on the last day at the end of the survey period by guests who have stayed continuously for two months or more.
<b>Star grading</b>	<p>The grading of hotels, motels and guest houses with facilities and serviced apartments is based on the classification system owned by AAA Tourism Pty Ltd. The gradings are allocated according to a points system based on the amenities and facilities available to guests. Details of the grading scheme are contained in the publication <i>Accommodation Guide</i> published by AAA Tourism Pty Ltd for each of the individual Australian Motoring Organisations. For the purpose of classifying establishments to a star grading in this publication, 'half' star gradings are ignored (e.g. a two and a half star grading has been shown as two star).</p> <p>While coverage has significantly improved, some establishments (including some competing in the four and five star markets and having significant takings) still remain outside the star grading scheme. These establishments have been given a star grading of 'ungraded'.</p>
<b>Takings from accommodation</b>	<p>Since 1 July 2000, takings from accommodation include gross revenue from the provision of accommodation, including GST. Takings from meals are excluded. In cases where takings from accommodation data cannot be provided inclusive of GST the amount of GST payable is estimated and the data revised accordingly.</p> <p>Takings from accommodation for each month generally represent the takings received during that month. Where payments are received in advance of, or after the provision of accommodation to guests, the monthly figure for takings from accommodation may not necessarily bear a direct relationship to the number of guests accommodated during the month.</p>

## GLOSSARY *continued*

<b>Unit lettings</b>	The total number of times a holiday flat, unit or house was occupied by a new tenant, counted only on the first night it was occupied by the new tenant. This is the equivalent of guest arrivals.
<b>Unit nights available</b>	The number of holiday flats, units and houses available multiplied by the number of days for which they were available during the survey period. For establishments closing (other than for seasonal reasons) or opening during this period, operating periods only are included.
<b>Unit nights occupied</b>	The total number of nights each holiday flat, unit or house was occupied during the survey period.
<b>Unit occupancy rate</b>	<p>The unit occupancy rate for holiday flats, units and houses represents unit occupancy expressed as a percentage of total capacity available during the survey period,</p> $\text{Unit occupancy rate (\%)} = \frac{\text{Unit nights occupied}}{\text{Unit nights available}} * 100$ <p>providing that, for letting entities closing (other than for seasonal reasons) or opening during the survey period, the denominator of the above expression includes only operating periods.</p>
<b>Unpowered sites</b>	The maximum number of sites with no provision for connection to electric power supply, available at caravan parks for accommodating paying guests during the survey period.
<b>Visitor hostels</b>	Establishments with 25 or more bed spaces which provide accommodation to visitors on a bed basis (rather than by room). This category does not include establishments providing charity type accommodation (e.g. Salvation Army hostels) nor hotels, motels and guest houses without in-room facilities which provide accommodation on a per room basis.

## FOR MORE INFORMATION . . .

### INTERNET

**www.abs.gov.au** the ABS website is the best place for data from our publications and information about the ABS.

## INFORMATION AND REFERRAL SERVICE

Our consultants can help you access the full range of information published by the ABS that is available free of charge from our website. Information tailored to your needs can also be requested as a 'user pays' service. Specialists are on hand to help you with analytical or methodological advice.

### PHONE

1300 135 070

### EMAIL

client.services@abs.gov.au

### FAX

1300 135 211

### POST

Client Services, ABS, GPO Box 796, Sydney NSW 2001

## FREE ACCESS TO STATISTICS

All statistics on the ABS website can be downloaded free of charge.

### WEB ADDRESS

**www.abs.gov.au**